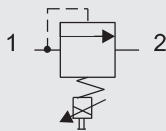
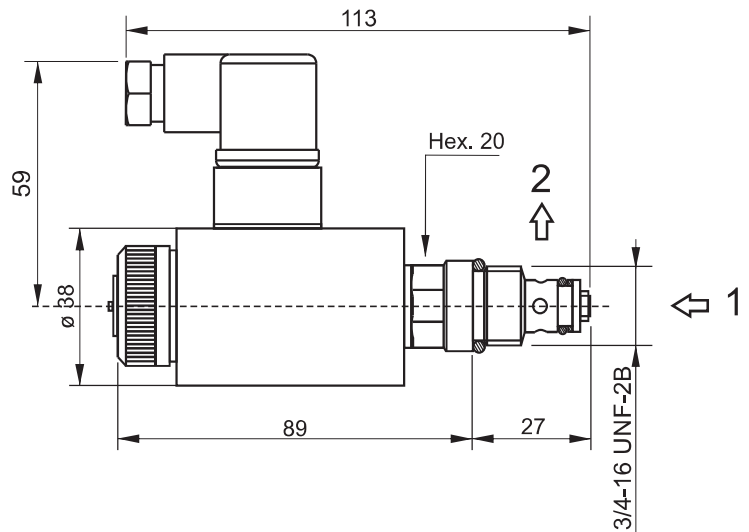


SAE08 PROPORTIONAL PRESSURE RELIEF VALVE



Main features

Max press.	350 bar
Max flow	2 l/min
Weight	0,46 Kg
PWM	120Hz
Hysteresis	5%
Duty cycle	ED 100%
Voltage	+/- 10% nominal voltage
Environment temperature	-15 ÷ +50°C
Fluid temperature	-30 - +80°C
Filtration	ISO 4406
Tightening torque	25Nm
Cavity	SAE08-2

Note: Supplying current to the coil from 0 to I max (see diagram), a proportional pressure variation is obtained on port P.

Note: Values measured on valve alone (no cavity) with an oil viscosity of 46 cSt at 50 °C. Pressure drop may change depending on fluid viscosity and temperature.

Spare part code

- VMPC** — Direct acting proportional relief valve
- 2** — Nominal size:  
2 = 2 l/min
- C** — Working range:  
A = 10 ÷ 80 bar  
C = 40 ÷ 250 bar
- E** — Options:  
E = emergency (std)
- 0000** — Supply voltage:  
- 0000 = no coil  
- 12DC  
- 24DC  
see coils table

Assembly code

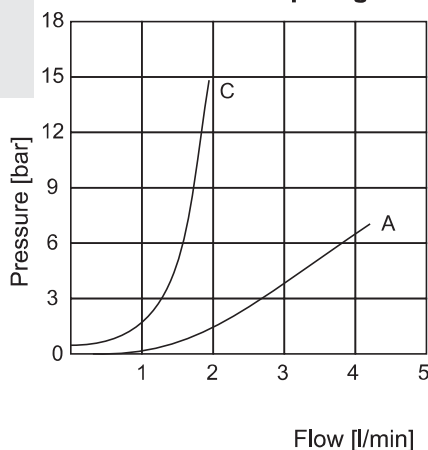
**P\*\*\* Voltage**

where \*\*\* stands for max setting pressure [bar], eg. P25012DC

Coils

Supply Voltage	Coil code	Connector code
12DC	98001190	KA132000B1
24DC	98002190	KA132000B1

Pressure drop diagram



Pressure vs current

