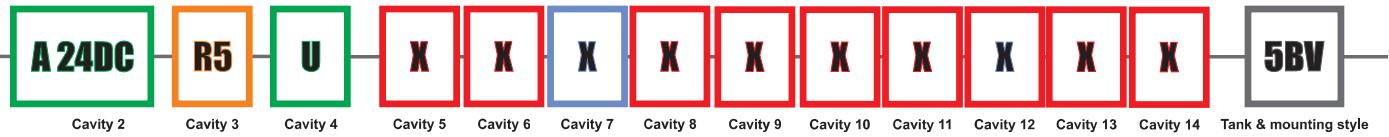


# POWER PACKS COMPACT speaking code



## Hydraulic valves cavity 2-3-4

| code | description                               |
|------|---|
| A    | NC 2/2 way poppet valve                   |
| B    | NC 2/2 way poppet valve + emergency       |
| Q    | NO 2/2 way poppet valve                   |
| C    | NO 2/2 way poppet valve + emergency       |
| D    | NC 2/2 way double poppet valve + emerg.   |
| M    | NO 2/2 way double poppet valve + emerg.   |
| E    | lever operated 2/2 valve                  |
| EM   | lever operated 2/2 valve with microswitch |
| Z    | 2 way emergency button                    |
| S    | flow control valve                        |
| T*   | proportional flow control valve (*=VDC)   |
| U    | hand pump 2cc/stroke                      |
| G    | closed plug                               |
| H    | closed plug with 1/4"BSP exit port        |
| N    | open plug with 1/4"BSP exit port          |
| P    | plug passing through 1/4"BSP exit port    |
| L    | basic plug                                |
| J    | check valve                               |
| JF   | check valve with 1/4"BSP exit port        |
| W    | pneumatic valve                           |

| code   | description (M4&U4 manifolds only)         |
|--------|--|
| 4VA11C | 4/2 way directional valve                  |
| 4VA2   | 4/3 way directional valve, center P to T   |
| 4VB2   | 4/3 way directional valve, closed center   |
| 4VC2   | 4/3 way directional valve, H center        |
| 4VE2   | 4/3 way directional valve, center A-B to T |

| code | description                                |
|------|--|
| F*   | pressure comp. flow control (*=l/min)      |
| R*   | adj. pressure comp. flow control (*=l/min) |
| S    | adjustable flow control valve              |
| Z    | 2 way emergency button                     |
| AR   | NC 2/2 way poppet valve reverse flow       |
| BR   | NC 2/2 way poppet v. reverse flow + emer.  |
| CR   | NO 2/2 way poppet v. reverse flow + emer.  |
| D    | NC 2/2 way double poppet valve + emerg.    |
| P*   | proportional relief valve (*= bar max)     |
| V*   | relief valve (*= bar max)                  |
| G    | closed plug                                |
| H    | closed plug with 1/4"BSP exit port         |
| N    | open plug with 1/4"BSP exit port           |
| P    | plug passing through 1/4"BSP exit port     |
| L    | basic plug                                 |
| J    | check valve                                |

## Hydraulic valves cavity 5-6-8-9 U manifold and for cavity 6-9-10-11-12-13-14 S manifold

| code    | description                          |
|---------|--------------------------------------|
| 1(01)   | 1 l/min 1/4"BSP p. comp. flow ctrl   |
| 1.5(01) | 1.5 l/min 1/4"BSP p. comp. flow ctrl |
| 2(01)   | 2 l/min 1/4"BSP p. comp. flow ctrl   |
| 3(01)   | 3 l/min 1/4"BSP p. comp. flow ctrl   |
| 5(01)   | 5 l/min 1/4"BSP p. comp. flow ctrl   |
| 7(01)   | 7 l/min 1/4"BSP p. comp. flow ctrl   |
| 10(01)  | 10 l/min 1/4"BSP p. comp. flow ctrl  |
| 13(01)  | 13 l/min 1/4"BSP p. comp. flow ctrl  |
| 17(01)  | 17 l/min 1/4"BSP p. comp. flow ctrl  |
| 22(01)  | 22 l/min 1/4"BSP p. comp. flow ctrl  |
| P01     | 1/4"BSP plug                         |

| code       | description                                 |
|------------|---|
| RETURN-KIT | suction/return line pipe                    |
| PP01370    | suction/return line pipe                    |
| RF01       | return line immersed filter                 |
| S01Z       | start-up 2+4l/min for 1ph AC mot.           |
| S01W       | start-up 3+6l/min for 1ph AC mot.           |
| S01A       | start-up 5+10l/min for 1ph AC mot.          |
| S01C       | start-up 6+14l/min for 1ph AC mot.          |
| S01F       | start-up 11+22l/min for 1ph AC mot.         |
| TADPH0001  | plastic pipe 90° elbow 1/4 BSPP             |
| TADPH0002  | plastic pipe 90° elbow 1/4 BSPP             |
| TADPH0003  | plastic pipe 90° elbow 1/4 BSPP             |
| TADPH0004  | male-male metal 1/4 pipe for VSC01 cavity 6 |

## Hydraulic valves cavity 7 for U and S manifold

| code    | description                          |
|---------|--------------------------------------|
| 1(04)   | 1 l/min pressure comp. flow control  |
| 1.5(04) | 1.5 l/min press. comp. flow control  |
| 2(04)   | 2 l/min pressure comp. flow control  |
| 3(04)   | 3 l/min pressure comp. flow control  |
| 5(04)   | 5 l/min pressure comp. flow control  |
| 7(04)   | 7 l/min pressure comp. flow control  |
| 10(04)  | 10 l/min pressure comp. flow control |
| 13(04)  | 13 l/min pressure comp. flow control |
| 17(04)  | 17 l/min pressure comp. flow control |
| 22(04)  | 22 l/min pressure comp. flow control |

## Hydraulic valves cavity 5 S manifold

| code | description    |
|------|----------------|
| P01  | 1/4" BSPP plug |

## Tanks & mounting style

| code       | description                 |
|------------|-----------------------------|
| 1.5L       | 1.5l square plastic         |
| 3L         | 3l square plastic           |
| 6L         | 6l square plastic           |
| 5M         | 5l square plastic           |
| 8M         | 8l square plastic           |
| 5P         | 5l round plastic            |
| 7P         | 7l round plastic            |
| 9P         | 9l round plastic            |
| 11P        | 11l round plastic           |
| 15NV       | 15l square plastic          |
| TCTAH00002 | 5l Q series square plastic  |
| TCTAH00005 | 12l Q series square plastic |

| code      | description                       |
|-----------|-----------------------------------|
| 1.5A      | 1.5l cylindrical steel            |
| 2.5A      | 2.5l cylindrical steel            |
| 5B        | 5l cylindrical steel              |
| 10B       | 10l cylindrical steel             |
| 12B       | 12l cylindrical steel             |
| F80000001 | steel tank adapter - to be welded |

| code | description                        |
|------|------------------------------------|
| 10D  | 10l round steel with brackets      |
| 22D  | 22l round steel with brackets      |
| 3EV  | 3l square steel vertical mounting  |
| 7EV  | 7l square steel vertical mounting  |
| 8EV  | 8l square steel vertical mounting  |
| 15EV | 15l square steel vertical mounting |
| 20EV | 20l square steel vertical mounting |
| 30EV | 30l square steel vertical mounting |

| code | description              |
|------|--------------------------|
| 10HD | 10l square aluminum tank |
| 25HD | 25l square aluminum tank |

| Tanks options |                   |
|---------------|-------------------|
| <b>V</b>      | vertical mounting |

# SMART POWER UNITS speaking code

**A 24DC**

Cavity 2

**R5**

Cavity 3

**U**

Cavity 4

**X**

Cavity 5

**X**

Cavity 7

**X**

Cavity 8

**X**

Cavity 9

**5BV**

Tank & mounting style

## Hydraulic valves cavity 2-3-4

| code      | description                               |
|-----------|---|
| <b>A</b>  | NC 2/2 way poppet valve                   |
| <b>B</b>  | NC 2/2 way poppet valve + emergency       |
| <b>Q</b>  | NO 2/2 way poppet valve                   |
| <b>C</b>  | NO 2/2 way poppet valve + emergency       |
| <b>D</b>  | NC 2/2 way double poppet valve + emerg.   |
| <b>M</b>  | NO 2/2 way double poppet valve + emerg.   |
| <b>E</b>  | lever operated 2/2 valve                  |
| <b>EM</b> | lever operated 2/2 valve with microswitch |
| <b>Z</b>  | 2 way emergency button                    |
| <b>S</b>  | flow control valve                        |
| <b>T*</b> | proportional flow control valve (*=VDC)   |
| <b>U</b>  | hand pump 2cc/stroke                      |
| <b>G</b>  | closed plug                               |
| <b>H</b>  | closed plug with 1/4"BSP exit port        |
| <b>N</b>  | open plug with 1/4"BSP exit port          |
| <b>P</b>  | plug passing through 1/4"BSP exit port    |
| <b>L</b>  | basic plug                                |
| <b>J</b>  | check valve                               |
| <b>JF</b> | check valve with 1/4"BSPP exit port       |

| code          | description (M4&U4 manifolds only)         |
|---------------|--|
| <b>4VA11C</b> | 4/2 way directional valve                  |
| <b>4VB2</b>   | 4/3 way directional valve, center P to T   |
| <b>4VB2</b>   | 4/3 way directional valve, closed center   |
| <b>4VC2</b>   | 4/3 way directional valve, H center        |
| <b>4VE2</b>   | 4/3 way directional valve, center A-B to T |

| code      | description                                |
|-----------|--|
| <b>F*</b> | pressure comp. flow control (*=l/min)      |
| <b>R*</b> | adj. pressure comp. flow control (*=l/min) |
| <b>S</b>  | adjustable flow control valve              |
| <b>Z</b>  | 2 way emergency button                     |
| <b>AR</b> | NC 2/2 way poppet valve reverse flow       |
| <b>BR</b> | NC 2/2 way poppet v. reverse flow + emer.  |
| <b>CR</b> | NO 2/2 way poppet v. reverse flow + emer.  |
| <b>D</b>  | NC 2/2 way double poppet valve + emerg.    |
| <b>P*</b> | proportional relief valve (*= bar max)     |
| <b>V*</b> | relief valve (*= bar max)                  |
| <b>G</b>  | closed plug                                |
| <b>H</b>  | closed plug with 1/4"BSP exit port         |
| <b>N</b>  | open plug with 1/4"BSP exit port           |
| <b>P</b>  | plug passing through 1/4"BSP exit port     |
| <b>L</b>  | basic plug                                 |
| <b>J</b>  | check valve                                |

## Hydraulic valves cavity 5-6-7-8-9

| code              | description                          |
|-------------------|--------------------------------------|
| <b>1(04)</b>      | 1 l/min pressure comp. flow control  |
| <b>1.5(04)</b>    | 1,5 l/min press. comp. flow control  |
| <b>2(04)</b>      | 2 l/min pressure comp. flow control  |
| <b>3(04)</b>      | 3 l/min pressure comp. flow control  |
| <b>5(04)</b>      | 5 l/min pressure comp. flow control  |
| <b>7(04)</b>      | 7 l/min pressure comp. flow control  |
| <b>10(04)</b>     | 10 l/min pressure comp. flow control |
| <b>13(04)</b>     | 13 l/min pressure comp. flow control |
| <b>17(04)</b>     | 17 l/min pressure comp. flow control |
| <b>22(04)</b>     | 22 l/min pressure comp. flow control |
| <b>1(01)</b>      | 1 l/min 1/4"BSPP p. comp. flow ctrl  |
| <b>1.5(01)</b>    | 1,5 l/min 1/4"BSPP p.comp. flow ctrl |
| <b>2(01)</b>      | 2 l/min 1/4"BSPP p. comp. flow ctrl  |
| <b>3(01)</b>      | 3 l/min 1/4"BSPP p. comp. flow ctrl  |
| <b>5(01)</b>      | 5 l/min 1/4"BSPP p. comp. flow ctrl  |
| <b>7(01)</b>      | 7 l/min 1/4"BSPP p. comp. flow ctrl  |
| <b>10(01)</b>     | 10 l/min 1/4"BSPP p. comp. flow ctrl |
| <b>13(01)</b>     | 13 l/min 1/4"BSPP p. comp. flow ctrl |
| <b>17(01)</b>     | 17 l/min 1/4"BSPP p. comp. flow ctrl |
| <b>22(01)</b>     | 22 l/min 1/4"BSPP p. comp. flow ctrl |
| <b>P01</b>        | 1/4"BSPP plug                        |
| <b>RETURN-KIT</b> | suction/return line pipe             |
| <b>PP01370</b>    | suction/return line pipe             |
| <b>RF01</b>       | return line immersed filter          |
| <b>S01Z</b>       | start-up 2÷4l/min for 1ph AC mot.    |
| <b>S01W</b>       | start-up 3÷6l/min for 1ph AC mot.    |
| <b>S01A</b>       | start-up 5÷10l/min for 1ph AC mot.   |
| <b>S01C</b>       | start-up 6÷14l/min for 1ph AC mot.   |
| <b>S01F</b>       | start-up 11÷22l/min for 1ph AC mot.  |

## Tanks & mounting style

| code        | description         |
|-------------|---------------------|
| <b>1.5L</b> | 1,5l square plastic |
| <b>3L</b>   | 3l square plastic   |
| <b>6L</b>   | 6l square plastic   |
| <b>5M</b>   | 5l square plastic   |
| <b>8M</b>   | 8l square plastic   |
| <b>5P</b>   | 5l round plastic    |
| <b>7P</b>   | 7l round plastic    |
| <b>9P</b>   | 9l round plastic    |
| <b>11P</b>  | 11l round plastic   |
| <b>15NV</b> | 15l square plastic  |

| code             | description                       |
|------------------|-----------------------------------|
| <b>1.5A</b>      | 1,5l cylindrical steel            |
| <b>2.5A</b>      | 2,5l cylindrical steel            |
| <b>5B</b>        | 5l cylindrical steel              |
| <b>10B</b>       | 10l cylindrical steel             |
| <b>12B</b>       | 12l cylindrical steel             |
| <b>F80000001</b> | steel tank adapter - to be welded |

| code        | description                        |
|-------------|------------------------------------|
| <b>10D</b>  | 10l round steel with brackets      |
| <b>22D</b>  | 22l round steel with brackets      |
| <b>3EV</b>  | 3l square steel vertical mounting  |
| <b>7EV</b>  | 7l square steel vertical mounting  |
| <b>8EV</b>  | 8l square steel vertical mounting  |
| <b>15EV</b> | 15l square steel vertical mounting |
| <b>20EV</b> | 20l square steel vertical mounting |
| <b>30EV</b> | 30l square steel vertical mounting |

| code        | description              |
|-------------|--------------------------|
| <b>10HD</b> | 10l square aluminum tank |
| <b>25HD</b> | 25l square aluminum tank |

| Tanks options |                   |
|---------------|-------------------|
| <b>V</b>      | vertical mounting |

# POWER PACKS MICRO speaking code

**A 24DC**

Cavity 2

**R5**

Cavity 3

**U**

Cavity 4

**X**

Cavity 5

**X**

Cavity 7

**X**

Cavity 8

**1,2R**

Tank & mounting style

## Hydraulic valves cavity 2-3-4

| code      | description                               |
|-----------|---|
| <b>A</b>  | NC 2/2 way poppet valve                   |
| <b>B</b>  | NC 2/2 way poppet valve + emergency       |
| <b>Q</b>  | NO 2/2 way poppet valve                   |
| <b>C</b>  | NO 2/2 way poppet valve + emergency       |
| <b>D</b>  | NC 2/2 way double poppet valve + emerg.   |
| <b>M</b>  | NO 2/2 way double poppet valve + emerg.   |
| <b>E</b>  | lever operated 2/2 valve                  |
| <b>EM</b> | lever operated 2/2 valve with microswitch |
| <b>Z</b>  | 2 way emergency button                    |
| <b>S</b>  | flow control valve                        |
| <b>T*</b> | proportional flow control valve (*=VDC)   |
| <b>U</b>  | hand pump 2cc/stroke                      |
| <b>G</b>  | closed plug                               |
| <b>H</b>  | closed plug with 1/4"BSP exit port        |
| <b>N</b>  | open plug with 1/4"BSP exit port          |
| <b>P</b>  | plug passing through 1/4"BSP exit port    |
| <b>L</b>  | basic plug                                |
| <b>J</b>  | check valve                               |
| <b>JF</b> | check valve with 1/4"BSP exit port        |

| code          | description (M4 manifolds only)            |
|---------------|--|
| <b>4VA11C</b> | 4/2 way directional valve                  |
| <b>4VB2</b>   | 4/3 way directional valve, center P to T   |
| <b>4VB2</b>   | 4/3 way directional valve, closed center   |
| <b>4VC2</b>   | 4/3 way directional valve, H center        |
| <b>4VE2</b>   | 4/3 way directional valve, center A-B to T |

| code      | description                                      |
|-----------|--|
| <b>F*</b> | pressure comp. flow control valve (*=l/min)      |
| <b>R*</b> | adj. pressure comp. flow control valve (*=l/min) |
| <b>S</b>  | adjustable flow control valve                    |
| <b>Z</b>  | 2 way emergency button                           |
| <b>AR</b> | NC 2/2 way poppet valve reverse flow             |
| <b>BR</b> | NC 2/2 way poppet v. reverse flow + emerg.       |
| <b>CR</b> | NO 2/2 way poppet v. reverse flow + emerg.       |
| <b>D</b>  | NC 2/2 way double poppet valve + emerg.          |
| <b>P*</b> | proportional relief valve (*= bar max)           |
| <b>G</b>  | closed plug                                      |
| <b>H</b>  | closed plug with 1/4"BSP exit port               |
| <b>N</b>  | open plug with 1/4"BSP exit port                 |
| <b>P</b>  | plug passing through 1/4"BSP exit port           |
| <b>L</b>  | basic plug                                       |
| <b>J</b>  | check valve                                      |

| code        | description (MR manifolds only)     |
|-------------|-------------------------------------|
| <b>DM *</b> | relief valve P (*= bar max)         |
| <b>XM</b>   | closed plug for relief valve cavity |

| code      | description (MR manifolds)        |
|-----------|-----------------------------------|
| <b>MG</b> | closed plug                       |
| <b>JP</b> | check valve 5/8-18UNF poppet type |

## Hydraulic valves cavity 5-7-8

| code              | description                                   |
|-------------------|---|
| <b>1(04)</b>      | 1 l/min pressure comp. flow control           |
| <b>1.5(04)</b>    | 1,5 l/min press. comp. flow control           |
| <b>2(04)</b>      | 2 l/min pressure comp. flow control           |
| <b>3(04)</b>      | 3 l/min pressure comp. flow control           |
| <b>5(04)</b>      | 5 l/min pressure comp. flow control           |
| <b>7(04)</b>      | 7 l/min pressure comp. flow control           |
| <b>10(04)</b>     | 10 l/min pressure comp. flow control          |
| <b>13(04)</b>     | 13 l/min pressure comp. flow control          |
| <b>17(04)</b>     | 17 l/min pressure comp. flow control          |
| <b>22(04)</b>     | 22 l/min pressure comp. flow control          |
| <b>1(01)</b>      | 1 l/min 1/4"BSPP p. comp. flow ctrl           |
| <b>1.5(01)</b>    | 1,5 l/min 1/4"BSPP p.comp. flow ctrl          |
| <b>2(01)</b>      | 2 l/min 1/4"BSPP p. comp. flow ctrl           |
| <b>3(01)</b>      | 3 l/min 1/4"BSPP p. comp. flow ctrl           |
| <b>5(01)</b>      | 5 l/min 1/4"BSPP p. comp. flow ctrl           |
| <b>7(01)</b>      | 7 l/min 1/4"BSPP p. comp. flow ctrl           |
| <b>10(01)</b>     | 10 l/min 1/4"BSPP p. comp. flow ctrl          |
| <b>13(01)</b>     | 13 l/min 1/4"BSPP p. comp. flow ctrl          |
| <b>17(01)</b>     | 17 l/min 1/4"BSPP p. comp. flow ctrl          |
| <b>22(01)</b>     | 22 l/min 1/4"BSPP p. comp. flow ctrl          |
| <b>P01</b>        | 1/4"BSPP plug                                 |
| <b>RETURN-KIT</b> | suction/return line pipe                      |
| <b>PP01370</b>    | suction/return line pipe                      |
| <b>TADPH00001</b> | Plastic pipe 90 degrees elbow 1/4 BSPP 126mm  |
| <b>TADPH00002</b> | Plastic pipe 90 degrees elbow 1/4 BSPP 150 mm |
| <b>TADPH00003</b> | Plastic pipe 90 degrees elbow 1/4 BSPP 207mm  |

## Tanks & mounting style

| code        | description              |
|-------------|--------------------------|
| <b>0.4R</b> | 0,4l cylindrical plastic |
| <b>0.7R</b> | 0,7l cylindrical plastic |
| <b>1.2R</b> | 1,2l cylindrical plastic |
| <b>1T</b>   | 1l square plastic        |
| <b>1.5T</b> | 1,5l square plastic      |
| <b>2T</b>   | 2l square plastic        |
| <b>2.7T</b> | 2,7l square plastic      |
| <b>3.5T</b> | 3,5l square plastic      |

| code             | description                       |
|------------------|-----------------------------------|
| <b>0.7F</b>      | 0,7l cylindrical steel            |
| <b>1.2F</b>      | 1,2l cylindrical steel            |
| <b>1.7H</b>      | 1,7l cylindrical steel            |
| <b>2.4H</b>      | 2,4l cylindrical steel            |
| <b>F80000012</b> | steel tank adapter - to be welded |

| Tanks options |                   |
|---------------|-------------------|
| <b>V</b>      | vertical mounting |

**SMART CENTRAL MANIFOLDS «SR, SRD, SRT & SRDT»**

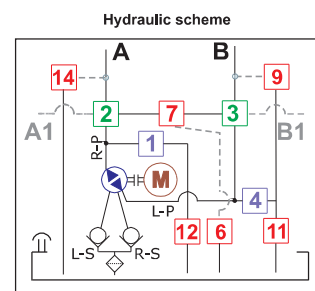
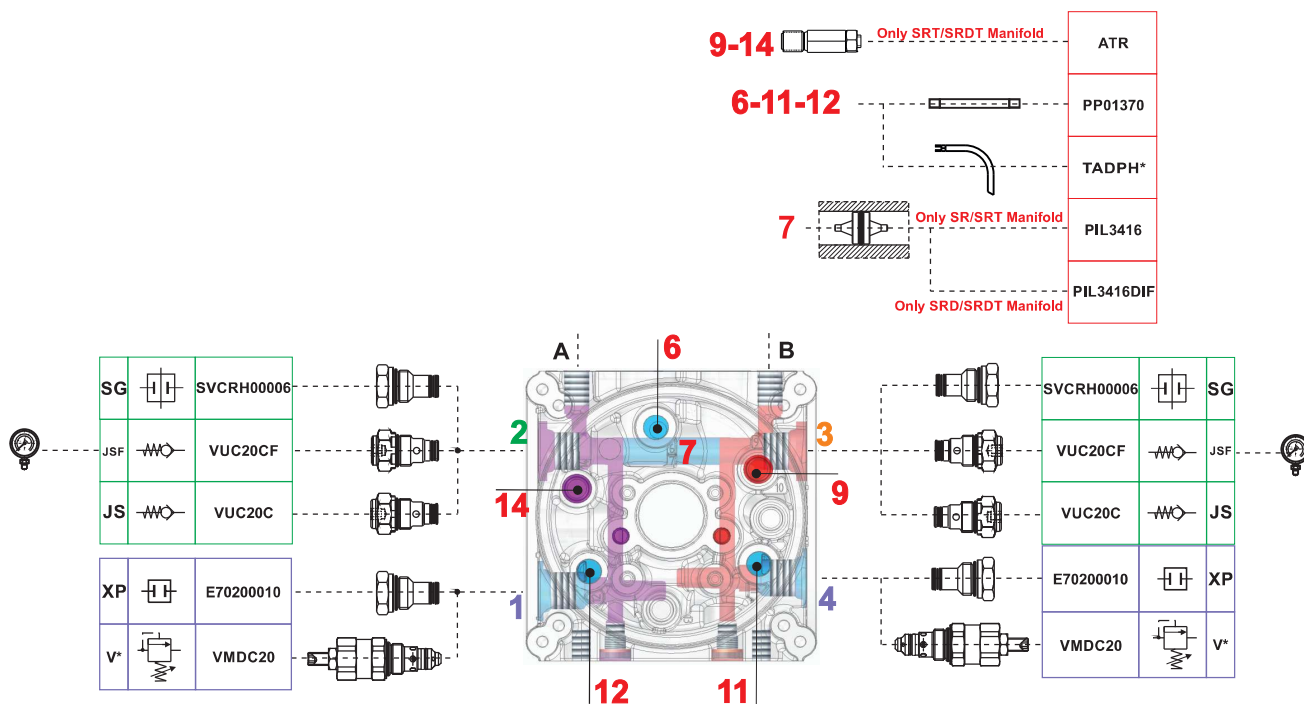


SR: Smart Central Manifold for reversible applications with cylinder area ratio equal to 1

SRD: Smart Central Manifold for reversible applications with differential area cylinder area

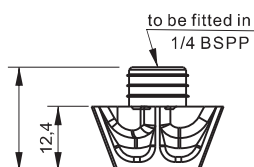
SRT: Smart Central Manifold for reversible applications with cylinder area ratio equal to 1 plus thermal valves

SRDT: Smart Central Manifold for reversible applications with differential area cylinder plus thermal valves



**TANK ACCESSORIES**
**Relief valve diffuser**

To be mounted in cavity Tr



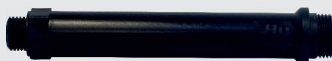
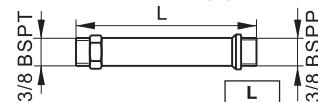
It reduces foam and noise when relief valve is working  
Recommended for all vertical mounted tanks.

Weight: 0,01 Kg


**Spare part code**
**SFEP01D**
**1/4" suction pipe**

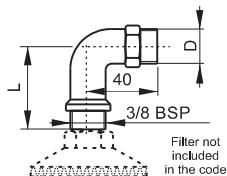

|         | L   |
|---------|-----|
| PP0130  | 30  |
| PP0180  | 80  |
| PP01120 | 120 |

To fit inlet strainers C34100005 to Gr.0 pumps  
Weight: 0,01 Kg (average)


**Spare part code**
**PP01\***
**3/8" suction pipe**


|         | L   |
|---------|-----|
| PP0242  | 42  |
| PP0268  | 68  |
| PP02105 | 105 |
| PP02125 | 125 |
| PP02142 | 142 |
| PP02165 | 165 |
| PP02180 | 180 |
| PP02190 | 190 |
| PP02237 | 240 |
| PP02320 | 320 |
| PP02370 | 370 |

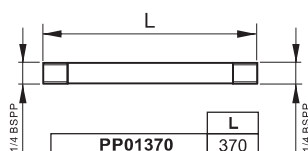
To fit inlet strainers C34100005 to Gr.1 pumps  
Weight: 0,02 Kg (average)


**Spare part code**
**PP02\*\***
**90° elbow for suction pipe  
M 1/4" & 3/8" BSPT - M 3/8" BSPP**


|         | L  | D        |
|---------|----|----------|
| PP01E40 | 40 | 1/4 BSPT |
| PP01E77 | 77 | 1/4 BSPT |
| PP02E40 | 40 | 3/8 BSPT |
| PP02E77 | 77 | 3/8 BSPT |

Recommended for horizontal tanks

Weight: 0,01 Kg


**Spare part code**
**PP0\*E\*\***
**1/4" suction/return pipe**


|         | L   |
|---------|-----|
| PP01370 | 370 |

Recommended as suction pipe for PMC02 hand pumps and as return pipe with C34200001 return filter.

Weight: 0,04 Kg


**Spare part code**
**PP01370**

Notes: Max torque for plastic pipe 5 Nm