

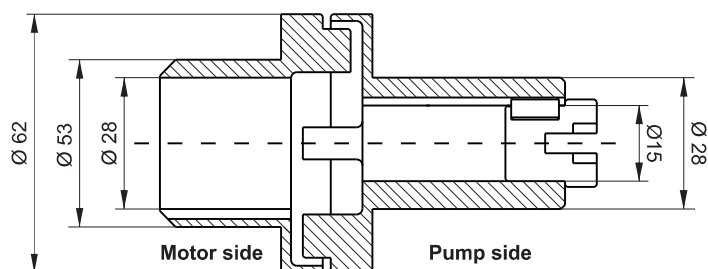
ELASTIC MOUNTING KIT FOR FRAME 100/112 B14 IEC MOTORS



Kit weight: 1,9 Kg

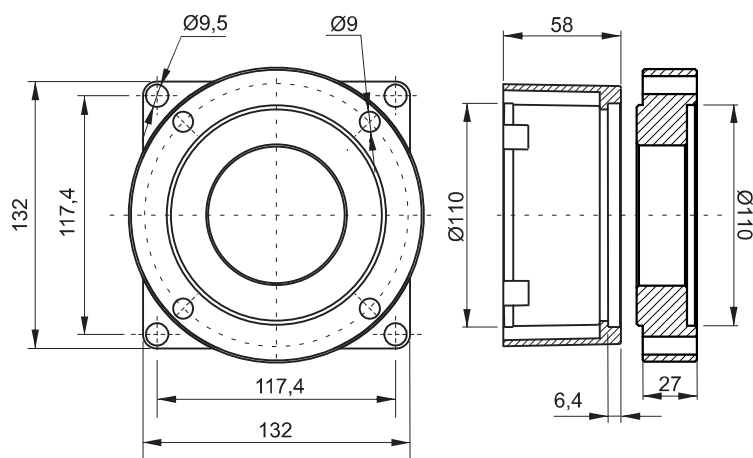
Elastic coupling

Elastic coupling **T54001100** Weight: 0,36 Kg



Adaptor flange

Adaptor flange **FTE270100** Weight: 1,54 Kg



| Description | Assembly code* | Spare part code |
|----------------------|------------------|------------------|
| Elastic coupling | XB14E 100 | T54001100 |
| B14 mounting flanges | | FTE270100 |

* Note: The coupling+flange kit is already included when specifying a B14 motor in PPC assembly code. XB14E 100 code has to be indicated only when ordering PPC with no motor but with coupling+flange kit. Other couplings for different motor sides are available on request. Not suitable for S series pump.

Attention! When assembling frame B14 motors with XB14 flange+coupling kit, please respect positioning tolerances as per top drawing. Failure to do so can cause malfunctioning or component failure.

Attention! Heat up **ONLY** the aluminium coupling motor side in order to ease the assembly with the motor shaft.