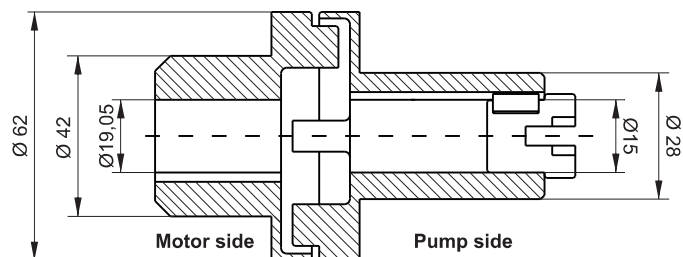


ELASTIC MOUNTING KIT FOR GASOLINE ENGINE

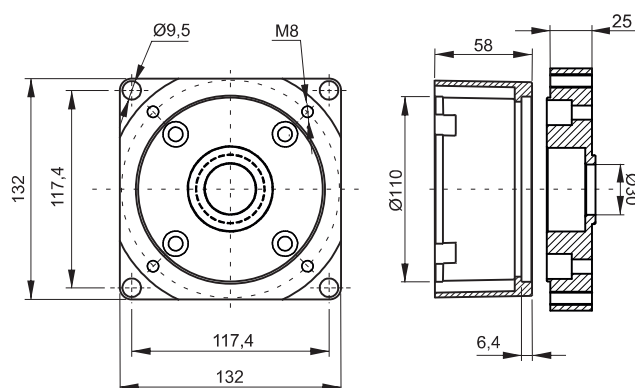


Kit weight: 1,9 Kg

Elastic coupling

Elastic coupling **T54001010** Weight: 0,34 Kg

Adaptor flanges

Adaptor flange **FTE270000** Weight: 1,56 Kg

Description	Assembly code*	Spare part code
Elastic coupling	XB14E GE	T54001010
Gasoline engine adaptor kit flange		FTE270000

This elastic mounting kit for gasoline engine can be used also for other types of engine. For example:

- Honda GTX with Q shaft
- Kohler with 3/4" shaft
- Yanmar with E-D L48N shaft
- Yamaha with PTO type A and M. face A shaft
- Subaru with 3/4" shaft

* Note: The coupling+flange kit is already included when specifying a B14 motor in PPC assembly code. XB14GE code has to be indicated only when ordering PPC with no motor but with coupling+flange kit. Not suitable for S series pump.

Attention! When assembling frame B14 motors with XB14 flange+coupling kit, please respect positioning tolerances as per top drawing. Non-compliance can cause malfunctioning or component failure.

Attention! Heat up ONLY the aluminium coupling motor side in order to ease the assembly with the motor shaft.