

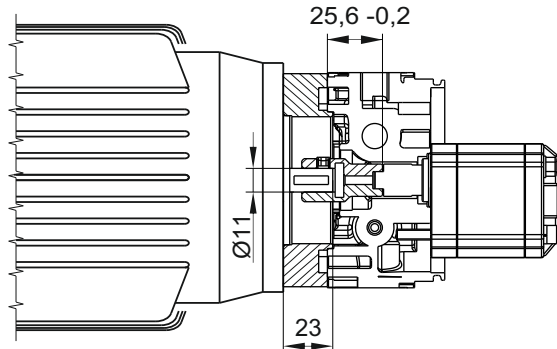
SECTION A



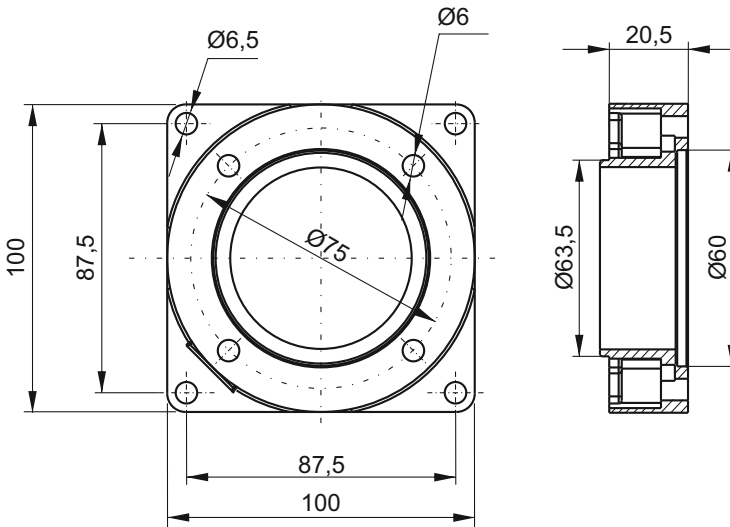
MOUNTING KIT FOR FRAME 63 B14 IEC MOTORS



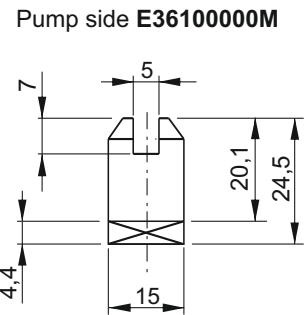
Kit weight: 0,18 Kg



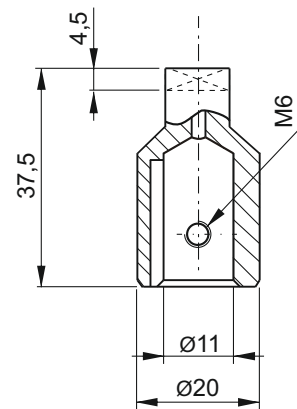
Adaptor flange



Coupling



Motor side M36100011



Description	Assembly code*	Spare part code
B14 63 motor side semi-coupling	NB14 63	M36100011
B14 pump side semi-coupling		E3610000M
B14 63 adaptor flange		F25030002

* Note: the coupling + flange kit is already included when specifying a B14 motor in PPM assembly code. NB1463 code to be indicated only when ordering PPM with no motor but with coupling + flange kit.

Attention! When assembling B14 IEC motors with NB14 flange + couplings kit, please respect positioning tolerances as shown in the drawing at the top of this page. Failure to do so can cause malfunctioning or component failure.