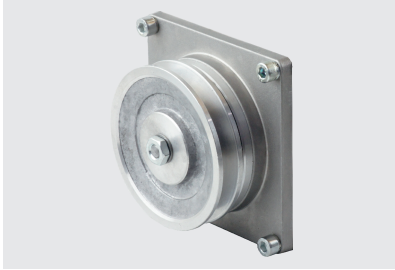
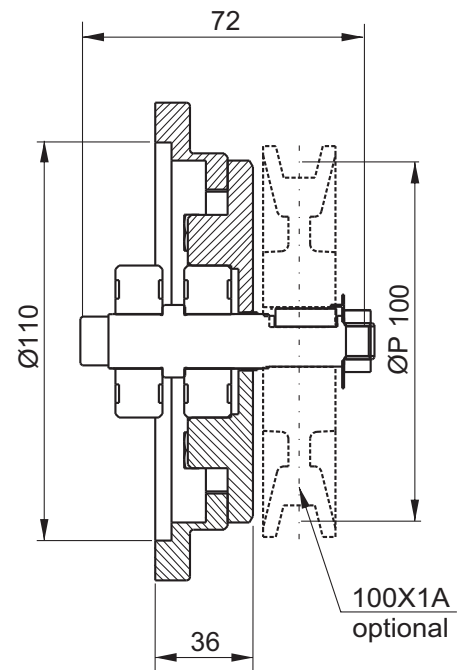
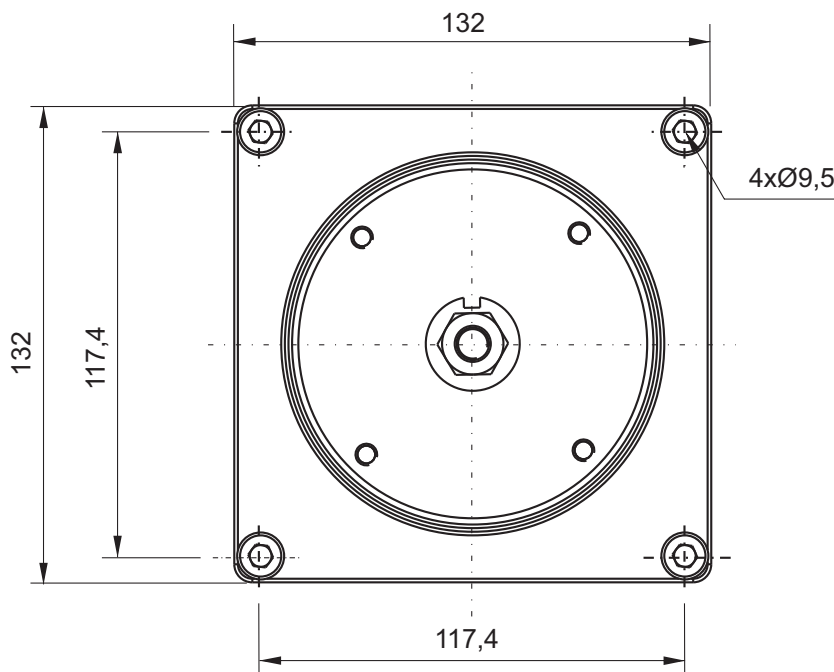
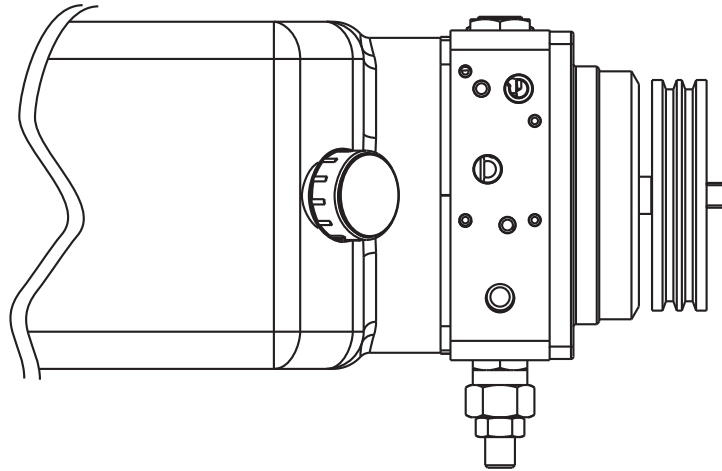


PULLEY DRIVE



For pulleys mounted on shaft
Ø14mm with 5mm key

Weight: 0,70 Kg

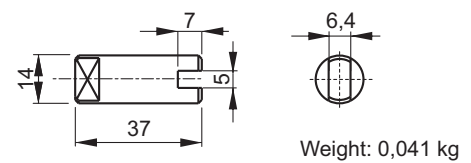


Description	Assembly code	Spare part code
Kit shaft and flange for mounting pulley	XPU1401-0 (pompa gr.0)	P46FP1401
B14 pump side half-coupling		E36200006 (gr. 0) E36200002 (gr. 1)
B14 71 adaptor flange	XPU1401-1 (pompa gr.1)	F27010001

Note: The pulley kit excludes the pulley which is available on request.
The standard model has 100X1A code, suitable for V-belts with nominal diameter 100mm, 1 throat, section type A. Pulley weight 100X1A: 0,265 kg

Couplings

Pump side gr. 1
Coupling E36200002



Pump side gr. 0
Coupling E36200006

