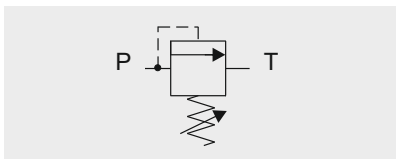
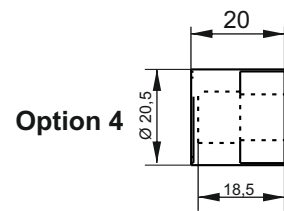
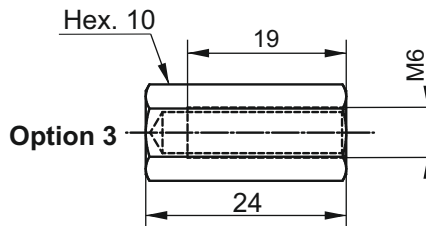
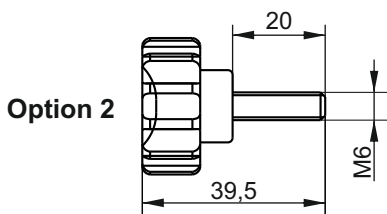
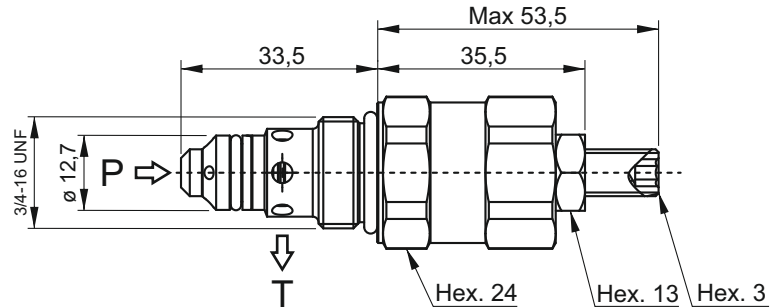


VMDC20 - DIRECT ACTING MAIN RELIEF VALVE



Main features

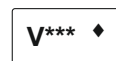
| | |
|---------------------|----------|
| Max pressure | 350 bar |
| Max flow | 20 l/min |
| Weight | 0,14 kg |

Recommended tightening torque: 40 Nm
 Recommended filtration: 25 ÷ 50 µ
 Oil temperature: -30 ÷ + 80 °C

Spare part code

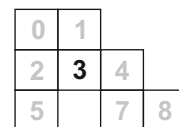
- VMDC** — Relief valve
- 20** — Nominal size:
20 = 20 l/min
- B** — Working range:
A = 3 ÷ 60 bar
B = 40 ÷ 120 bar
C = 80 ÷ 250 bar
D = 150 ÷ 350 bar
- 1** — Option:
1 = M6 screw (std)
2 = handwheel
3 = with cap
4 = plastic seal

Assembly code

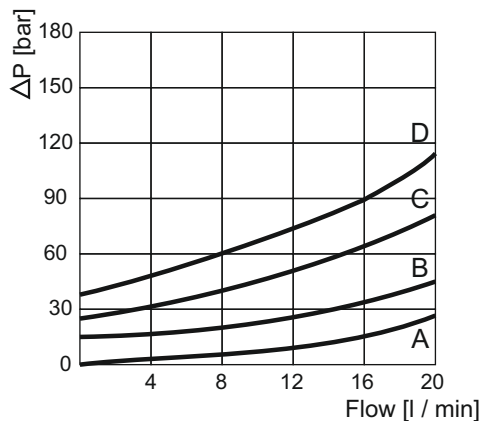


where *** stands for max setting pressure [bar]. Ex. V200
 where * is the option

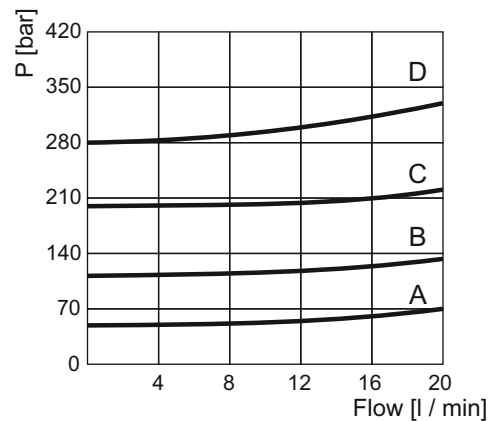
Mounting cavities



Minimum setting pressure



Pressure vs Flow



Note: Values measured on valve alone (no cavity) with an oil viscosity of 46 cSt at 50 °C. Pressure drop may change depending on fluid viscosity and temperature