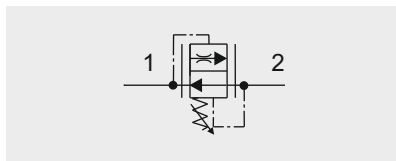
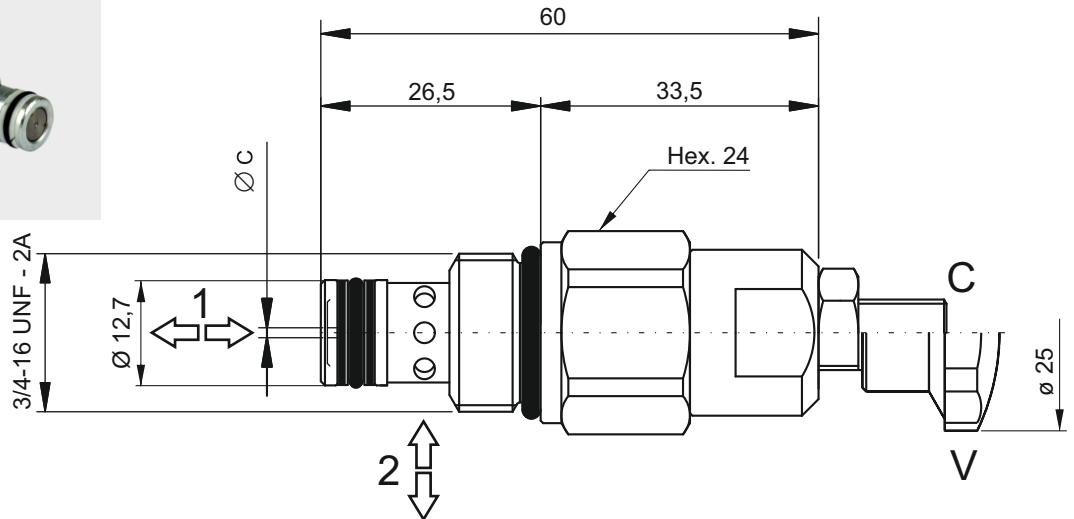
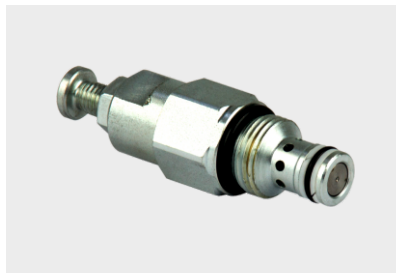


VCF6 - PRESSURE COMPENSATED FLOW CONTROL VALVE



Main features

Max pressure	350 bar
Max flow	18 l/min
Weight	0,11 kg

Recommended tightening torque: 25 Nm  
 Recommended filtration: 15 ± 20 µm  
 Oil temperature: -20 ÷ + 80 °C

Spare part code

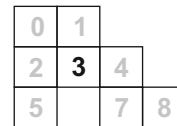
- VCF6** — Flow control valve pressure compensated
- \*** — Nominal dimension: see below table
- C** — Adjustment:  
C = screw (std)  
V = handwheel

Assembly code

**R \***

Where \* stands for nominal dimension

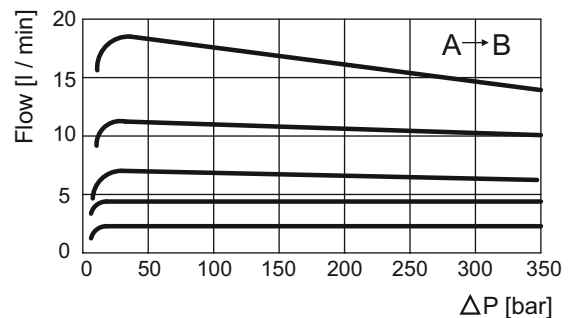
Mounting cavities



Available Range

Nominal dimension	Ø C	Controlled flow at 100 bar ± 10% l/min
2	1	0,8 ÷ 3,0 l/min
3	1,3	1,3 ÷ 5,1 l/min
4	1,5	1,9 ÷ 6,8 l/min
5	1,7	2,6 ÷ 9,1 l/min
6	2,2	4,0 ÷ 14,4 l/min
7	2,8	7,2 ÷ 18,0 l/min

Pressure drop diagram



Note: Values measured on valve alone (no cavity) with an oil viscosity of 46 cSt at 50 °C. Pressure drop may change depending on fluid viscosity and temperature