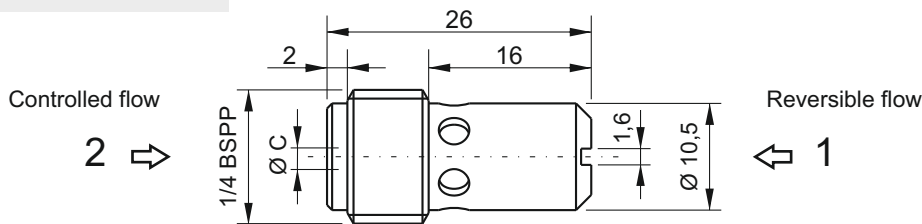
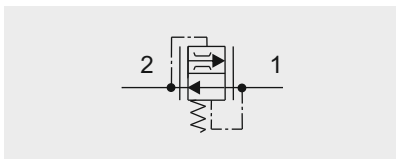
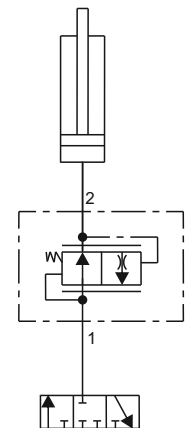


VSC01 - PRESSURE COMPENSATED FIXED FLOW CONTROL VALVE



Typical application



Main features

Max pressure	300 bar
Max flow	22 l/min
Weight	0,012 kg

Recommended tightening torque: 15 Nm
 Recommended filtration settings: 25 + 50 μ
 Oil temperature: -30 + + 80 °C

Spare part code

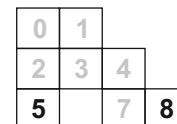
- VSC** — Flow control valve pressure compensated
- 01** — Nominal size: 01
- *** — Controlled flow: see below table

Assembly code

***(01)**

Where * stands for controlled flow [l/min]

Mounting cavities

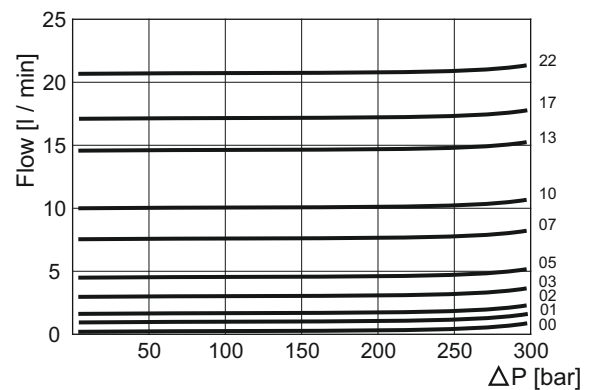


Note: cavity 5 is machined only on central manifold MB, cavity 8 is machined only on central manifolds MB and M4.

Controlled flow

Spare part code	Ø C [mm]	Portata [l/min]
VSC0100	0,8	1
VSC0101	1	1,5
VSC0102	1,25	2
VSC0103	1,5	3
VSC0105	1,75	5
VSC0107	2	7
VSC0110	2,5	10
VSC0113	2,75	13
VSC0117	3	17
VSC0122	3,5	22

Pressure drop diagram



Note: nominal controlled flows, measured at 100 bar with an oil viscosity of 46 cSt at 50 °C, are to be taken as general reference values and must be tested in the field.

Note: Values measured on valve alone (no cavity) with an oil viscosity of 46 cSt at 50 °C. Pressure drop may change depending on fluid viscosity and temperature