

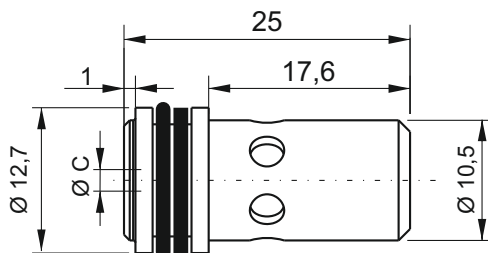
# SECTION D



## VSC04 - PRESSURE COMPENSATED FIXED FLOW CONTROL VALVE



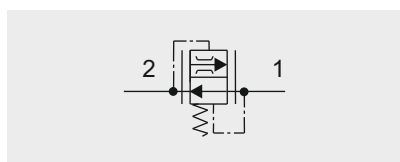
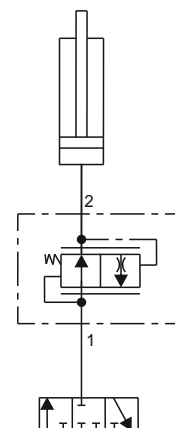
Controlled flow



Reversible flow



### Typical application



### Main features

Max pressure	300 bar
Max flow	22 l/min
Weight	0,012 kg

### Spare part code

- VSC** — Flow control valve pressure compensated
- 04** — Nominal size: 04
- \*** — Controlled flow: see below table

### Assembly code

**\*(04)**

Where \* stands for controlled flow [l/min]

### Mounting cavities

0	1		
2	3	4	
5		7	8

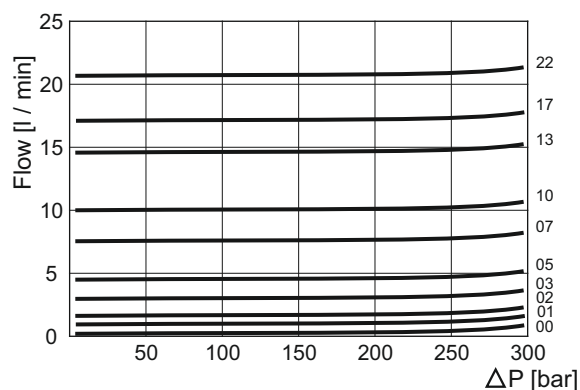
Note: cavity 7 is machined only on central manifold MB and MR.

Mounting cavity dimension: 12,7 H8  
 Recommended filtration settings: 25 + 50 µ  
 Oil temperature: -30 + + 80 °C

### Controlled flow

Spare part code	Ø C [mm]	Portata [l/min]
VSC0400	0,8	1
VSC0401	1	1,5
VSC0402	1,25	2
VSC0403	1,5	3
VSC0405	1,75	5
VSC0407	2	7
VSC0410	2,5	10
VSC0413	2,75	13
VSC0417	3	17
VSC0422	3,5	22

### Pressure drop diagram



Note: nominal controlled flows, measured at 100 bar with an oil viscosity of 46 cSt at 50 °C, are to be taken as general reference values and must be tested in the field.

Note: Values measured on valve alone (no cavity) with an oil viscosity of 46 cSt at 50 °C. Pressure drop may change depending on fluid viscosity and temperature