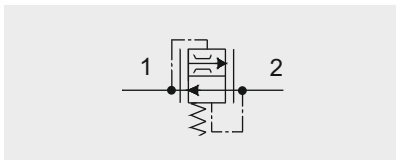
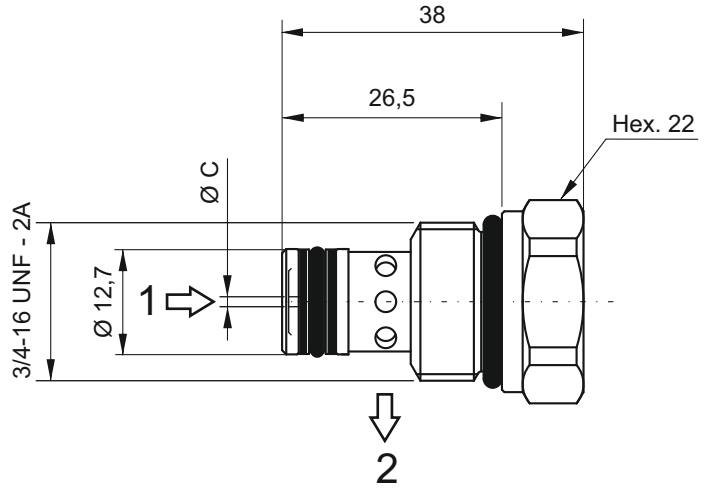


VSC6 - PRESSURE COMPENSATED FIXED FLOW CONTROL VALVE



Main features

Max pressure	350 bar
Max flow	22 l/min
Weight	0,06 kg

Recommended tightening torque: 25 Nm
 Recommended filtration: 25 + 50 µ
 Oil temperature: -30 + + 80 °C

Spare part code

- VSC** — Flow control valve pressure compensated
- 6** — Nominal size: 6
- *** — Controlled flow: see below table

Assembly code

F*

Where * stands for controlled flow [l/min]

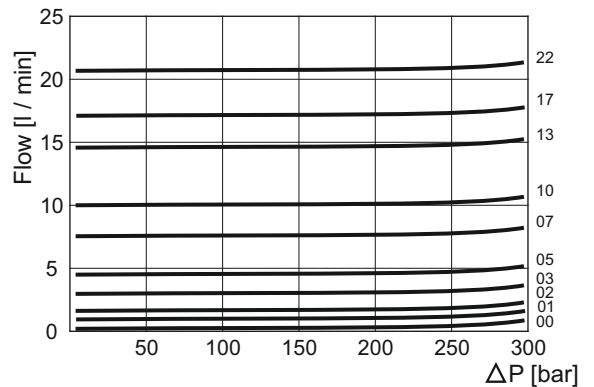
Mounting cavities

0	1	
2	3	4
5		7 8

Controlled flow

Spare part code	Ø C [mm]	Portata [l/min]
VSC600	0,8	1
VSC601	1	1,5
VSC602	1,25	2
VSC603	1,5	3
VSC605	1,75	5
VSC607	2	7
VSC610	2,5	10
VSC613	2,75	13
VSC617	3	17
VSC622	3,5	22

Pressure drop diagram



Note: nominal controlled flows, measured at 100 bar with an oil viscosity of 46 cSt at 50 °C, are to be taken as general reference values and must be tested in the field.

Note: Values measured on valve alone (no cavity) with an oil viscosity of 46 cSt at 50 °C. Pressure drop may change depending on fluid viscosity and temperature