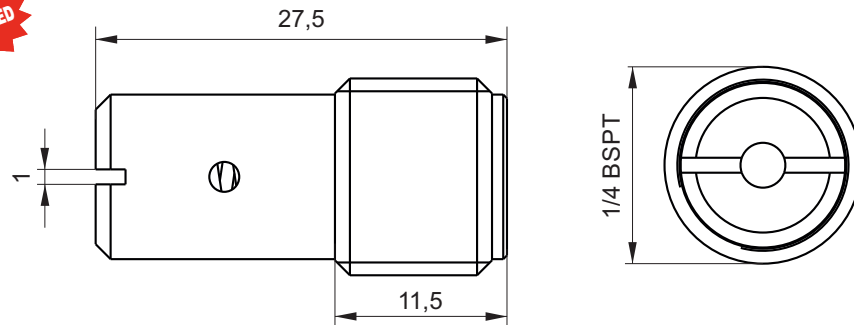


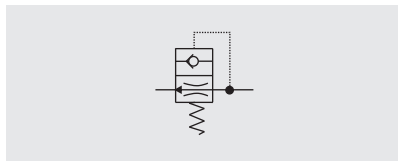
SECTION D



SUV01 - START-UP VALVE FOR SINGLE PHASE ELECTRIC MOTORS



SUV01 valve is to be mounted in cavity 9 of the central manifold, after its proper machining (drilling and threading). The function of this valve is to discharge the pressure inside the central manifold line between the pump and the check valve in cavity 0, when the power pack is off. It is typically used with single-phase motor starting under load, overcoming the inherent limitation of single phase AC induction motors.



Main features

Max pressure	300 bar
Max flow	22 l/min
Min flow	2 l/min
Weight	0,0025 kg

Recommended tightening torque: 15 Nm
 Recommended filtration: 25 + 50 μ
 Oil temperature: -10 + + 80 °C

Spare part code

- SUV** — Start-up valve for single phase electric motors
- 01** — Nominal size:
01 = 1/4 BSPP
- A** — Flow reference:
see below table for the proper choice depending on pump flow and fluid temperature

Assembly code

S01*

Where * stands for the setting

Mounting cavities

0	1
2	3 4
5	6 7 8 9

Note: cavities 3, 4 and 6 are present on central manifold type UB only.

Working limits diagram

Once the required power pack flow and the fluid working temperature are defined, the proper valve can be chosen from the diagram aside. Try to choose the valve with the working area most centered with required Q and T.

