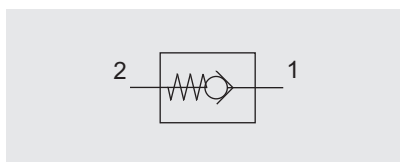
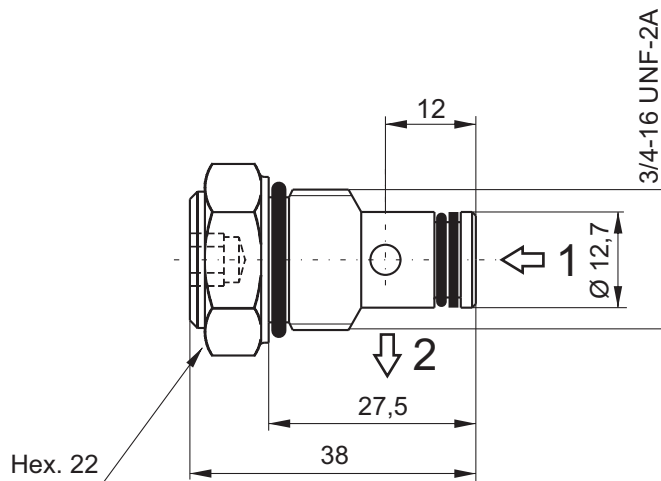


VUC20 - MAIN CHECK VALVE



The optional pressure port "F" may be used to connect a gauge to measure static pressures. Due to the nature of this Check Valve it will not always capture instantaneous pressure.



Main features

Max pressure	350 bar
Max flow	25 l/min
Weight	0,052 kg
Pressione di apertura	0,5 bar

Recommended tightening torque: 25 Nm
 Recommended filtration: 25 + 50 µ
 Oil temperature: -30 + + 80 °C

Spare part code

- VUC** — Check valve
- 20** — Nominal size: 20
- *** — Options:
 - = no options
 F = pressure port F 1/4 BSP
 FP = pressure port closed with a 1/4 BSP plug

Assembly code

J *

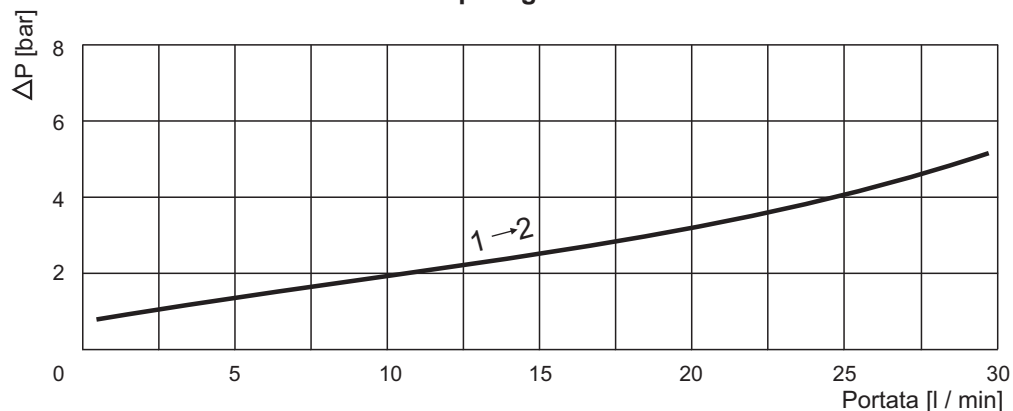
where * is the option

Mounting cavities

0	1
2	3 4
5	6 7 8

Note: cavities 3, 4 and 6 are present on central manifold type UB only.

Pressure drop diagram



Note: Values measured on valve alone (no cavity) with an oil viscosity of 46 cSt at 50 °C. Pressure drop may change depending on fluid viscosity and temperature