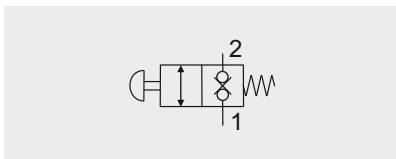
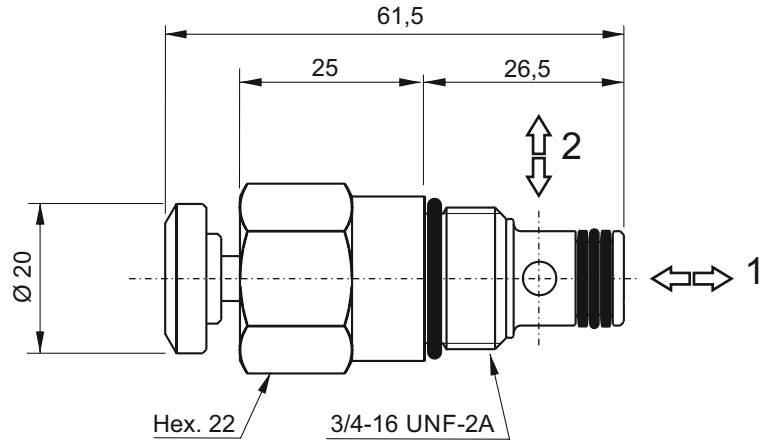
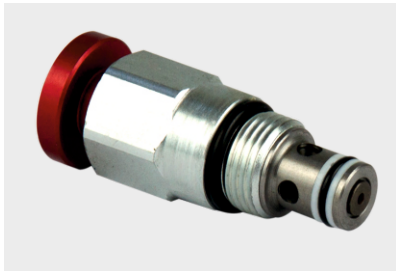


SECTION D



CPE - MANUAL EMERGENCY VALVE



Main features

Max pressure	300 bar
Max flow	25 l/min
Weight	0,12 kg

Recommended tightening torque: 25 Nm
 Recommended filtration: 25 + 50 µ
 Oil temperature: -30 + + 80 °C

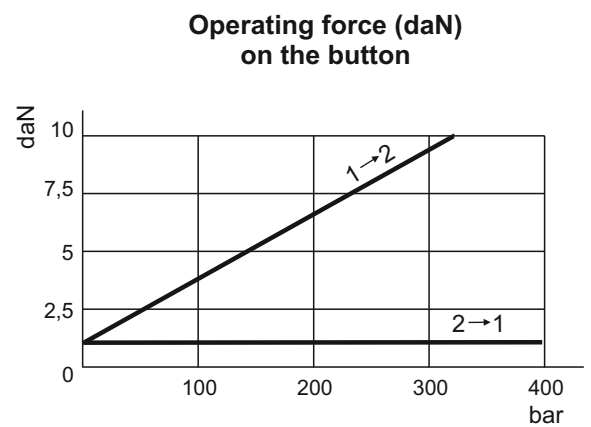
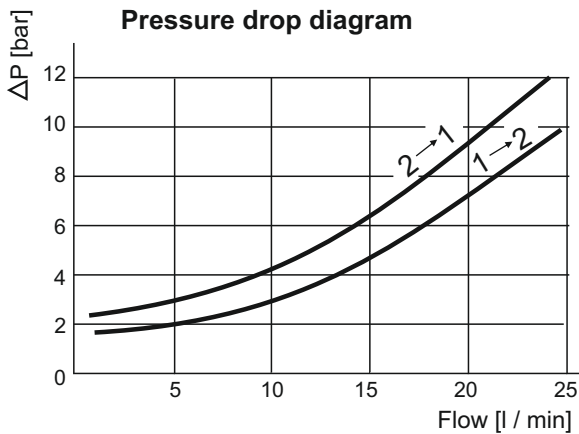
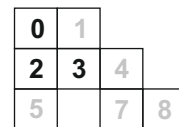
Spare part code

- CPE** — Two-way manual emergency valve
- 04** — Nominal size:
04 = 3/4-16 UNF
- P** — Operating device:
P = press button

Assembly code

Z

Mounting cavities



Note: Values measured on valve alone (no cavity) with an oil viscosity of 46 cSt at 50 °C. Pressure drop may change depending on fluid viscosity and temperature