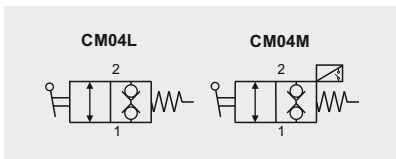
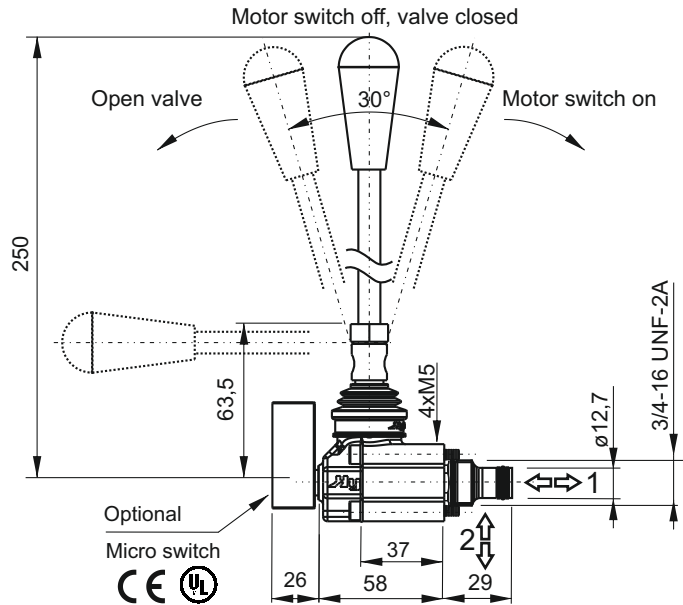
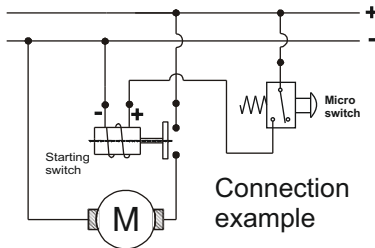
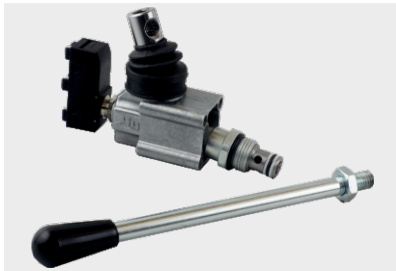


CM - MANUAL LEVER VALVE



Main features

Max pressure	300 bar
Max flow	25 l/min
Weight	0,34 kg
Max current	10 A - 400 V
Protection	IP20 (up to IP65 on request)
Room temp.	-25°C ÷ +85°C (higher temperature on request)

Fixing bolts: 4 x M5x45 (torque 5Nm)
 Cartridge tightening torque: 25Nm
 Recommended filtration: 25 ÷ 50 µ
 Oil temperature: -30 ÷ + 80 °C

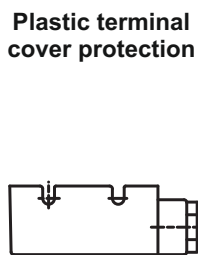
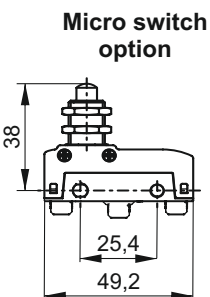
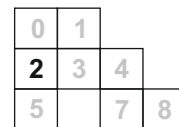
Spare part code

- CM** — Two-way manual lever valve
- 04** — Nominal size: 04 = 3/4-16 UNF
- L** — Type: L = lever (std), M = lever+micro switch

Assembly code

- E (CM04L)**
- EM (CM04M)**

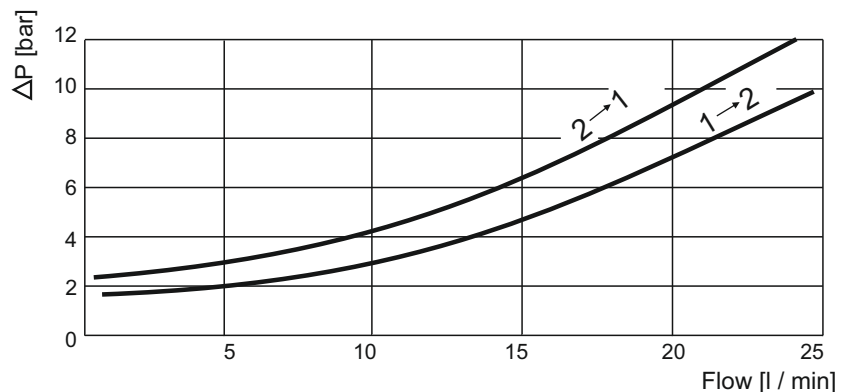
Mounting cavities



Spare part code
MCR1222

Spare part code
VFC02

Pressure drop diagram



Note: Values measured on valve alone (no cavity) with an oil viscosity of 46 cSt at 50 °C. Pressure drop may change depending on fluid viscosity and temperature