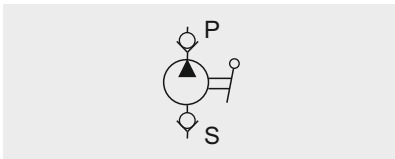
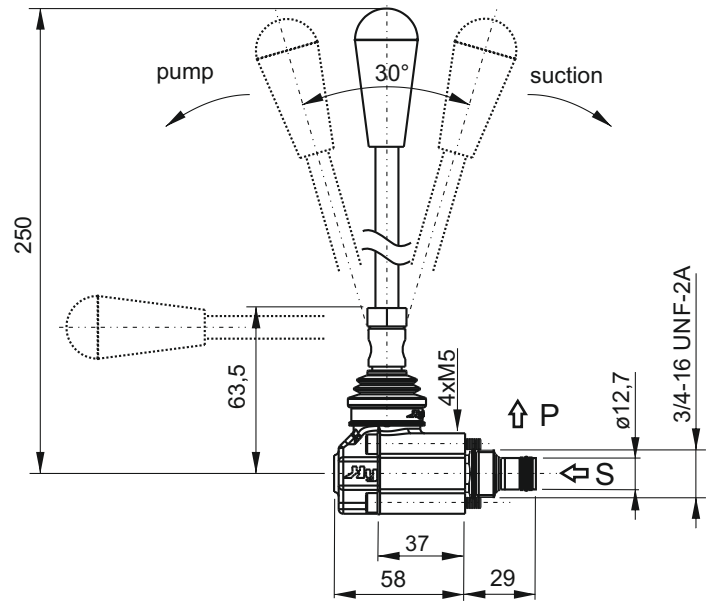


SECTION D



PMC - CARTRIDGE HAND PUMP



Main features

Max pressure	180 bar
Max flow	-
Weight	0,34 kg

Fixing bolts: 4x M5x45 (tightening torque: 5Nm)
 Cartridge tightening torque: 25Nm
 Recommended filtration: 25 ÷ 50 µ
 Oil temperature: -30 ÷ + 80 °C

Spare part code

- PMC** — Hand pump
- 02** — Nominal size:
02 = 2 cc/stroke
- L** — Type:
L = lever (std)

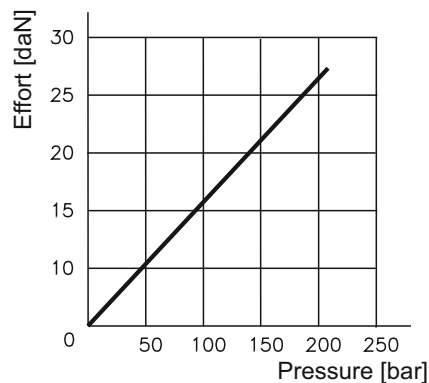
Assembly code

U

Mounting cavities

0	1	
2	3	4
5		7 8

Effort (daN)
operating on the lever end



Note: Values measured on valve alone (no cavity) with an oil viscosity of 46 cSt at 50 °C. Pressure drop may change depending on fluid viscosity and temperature