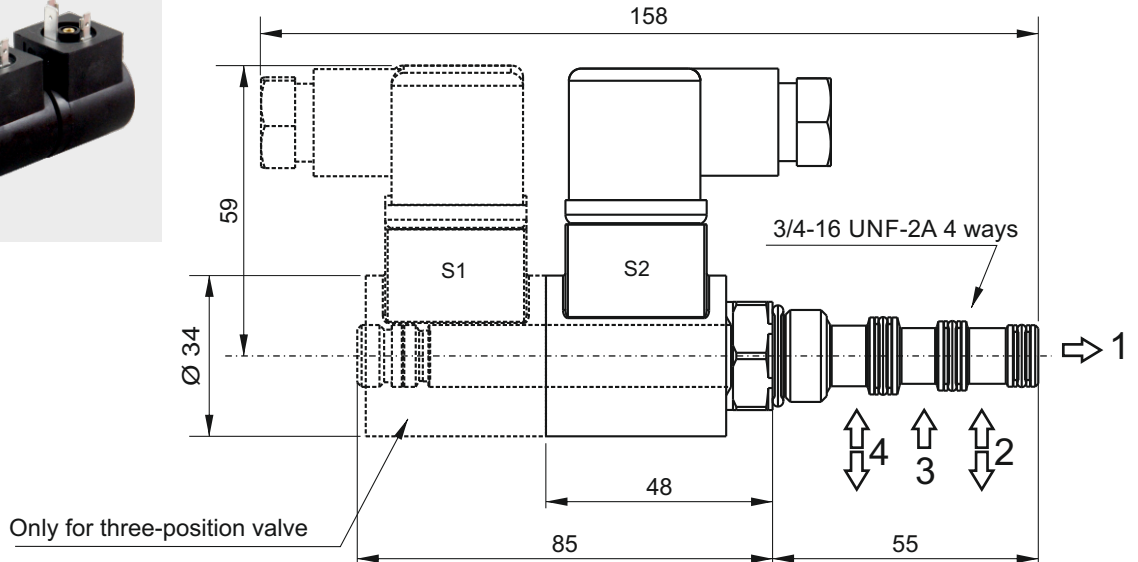
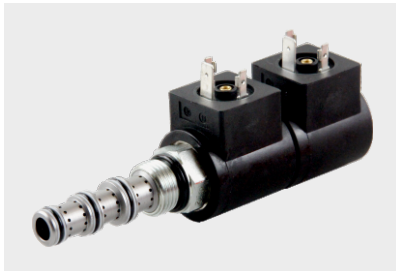


MSV4V - DIRECT OPERATED 4/3 OR 4/2 DIRECTIONAL SPOOL SOLENOID VALVES



Main features

Max pressure	210 bar
Max flow	11,5 l/min
Weight	0,37 Kg (1 solenoid) 0,64 Kg (2 solenoid)
Internal leakage	278 cc/min at 210 bar
Minimum pull-in voltage	85% of nominal
Available voltage	12VDC 24VDC 24VAC 110RAC 220RAC
Coils (see coils table)	M630 series M631 series
Normatives	EN50081-1/EN50082-2 (89/336 CEE electromagnetic comp.) 73/23/CEE / 96/68/CEE (low voltage)

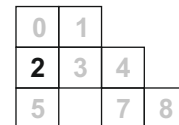
Spare part code

- MSV4V** — 4/3 or 4/2 directional spool solenoid valve
- A2** — Spool configuration: see below table
- 00** — Option: 00 = std
- 0000** — Supply voltage: 0000 = no coil (std) see coils table

Assembly code

4VA2 Voltage
Ex: 4VA2 24DC

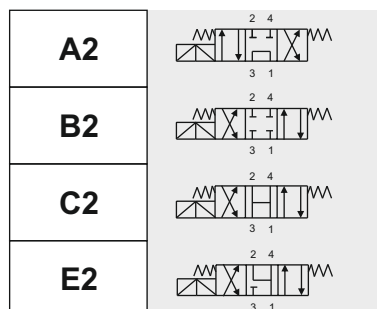
Mounting cavities



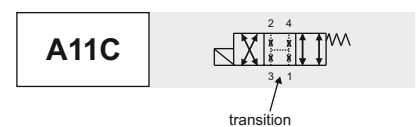
Note: MSV4V can be mounted on central manifold type M4 only.

Spools

Double solenoid



Single solenoid



Recommended tightening torque: 25 Nm
Recommended filtration: 25 + 50 μ
Oil temperature: -30 + + 80 °C

