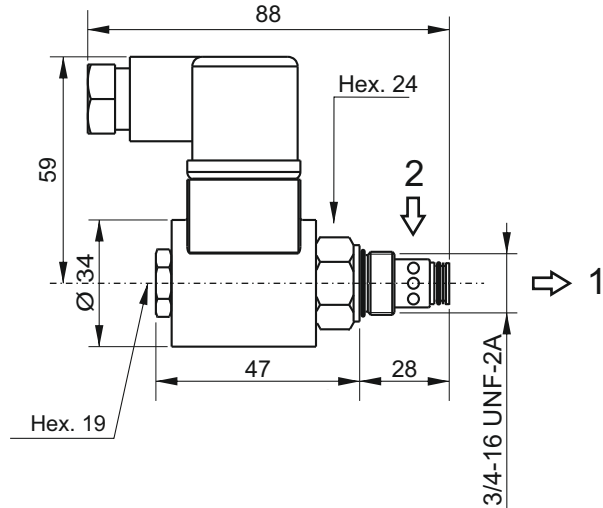


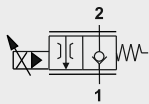
CSPC15 - PROPORTIONAL FLOW CONTROL VALVE



Coils

Supply voltage	Coil code	Connector code
12DC	M6306012	KA132000B1
24DC	M6306024	KA132000B1

For the controller see the VPC table in D section



Main features

Max press.	210 bar
Max flow	22 l/min
Weight	0,1 Kg (without coil)
PWM	120Hz
Hysteresis	5% (10% above 85% I _{max})
Duty cycle	ED 100%
Voltage	+/- 10% nominal voltage
Normatives	EN50081-1/EN50082-2 (89/336 CEE) 73/23/CEE / 96/68/CEE
Oil temperature	-40 - +120°C
Filtration	10 ÷ 25 µ
Tightening torque	30Nm

Spare part code

CSPC — Proportional flow control valve

15 — Nominal size:
15 = 15 l/min

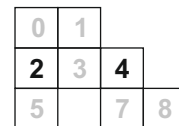
0 — Option:
0 = no option

0000 — Supply voltage:
- 0000 = no coil (std)
- 12DC
- 24DC
see coils table

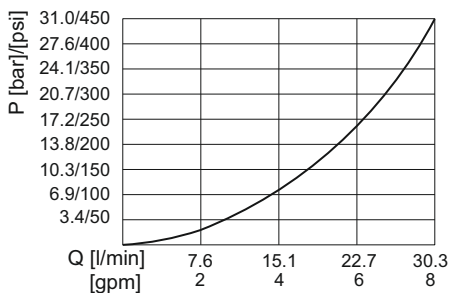
Assembly code

T* Voltage**
eg: T12DC

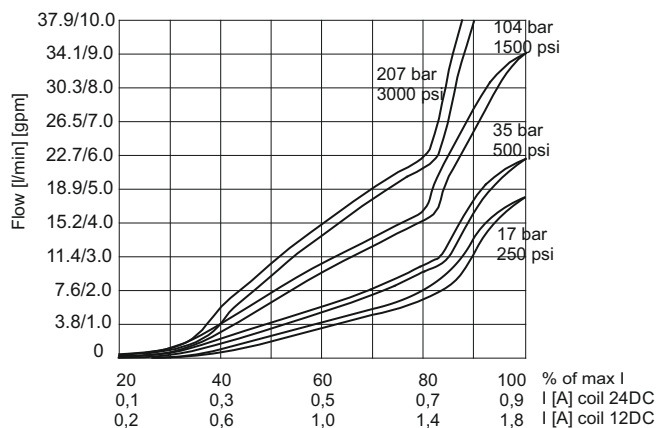
Mounting cavities



Pressure Drop 2 > 1 with fully open valve



Flow vs current at different pressure drops



Note: Values measured on valve alone (no cavity) with an oil viscosity of 46 cSt at 50 °C. Pressure drop may change depending on fluid viscosity and temperature.