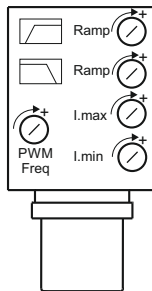


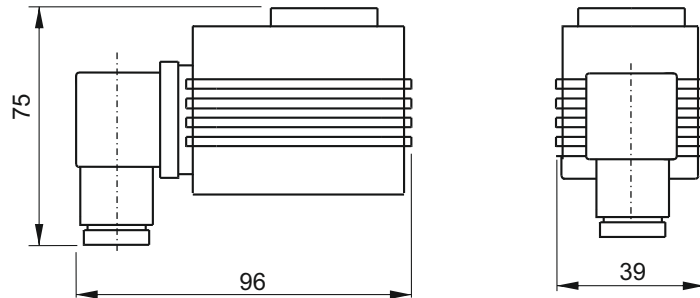
# SECTION D



## VPC - ELECTRONIC AMPLIFIER FOR PROPORTIONAL SOLENOID VALVES



ISO 4400 / DIN 43650-A



### Main features

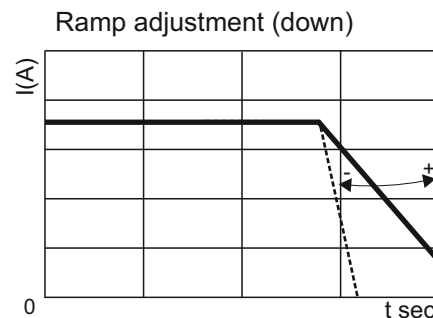
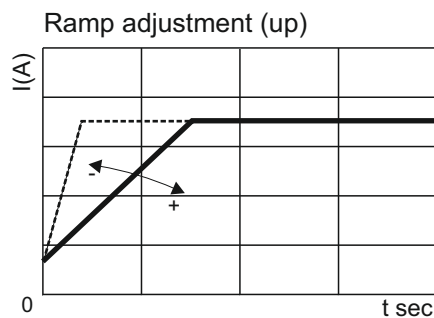
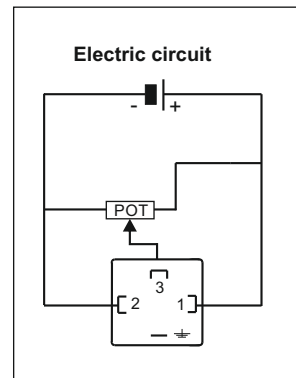
Supply voltage	12 / 24V DC
Voltage input signal range	0 ~ 10 V
Max current range	2,5A
PWM (optionally adjustable)	120 Hz (50 + 400 Hz)
Ramp adjustment (independent)	5%
Input impedance	100 kohm
Voltage	+/- 10% nominal voltage
Weight	0,11 kg
Normatives	EN50081-1/EN50082-2 (89/336 CEE electromagnetic comp.) 73/23/CEE / 96/68/CEE (low voltage)

### Spare part code

- VPC** — Electronic amplifier for solenoid valves
- 00** — Options

Suitable for:

- CSPC15\*\*\*\* proportional flow control valve
- VMPC2\*\*\*\* proportional pressure relief valve
- other proportional valves



### Instruction for use:

- 1) turn the "I MIN" trimmer fully counterclockwise;
- 2) adjust the external voltage input signal to the desired initial regulating (flow or pressure) value;
- 3) turn "I MIN" trimmer in a clockwise direction until valve just starts regulating;
- 4) adjust the external voltage input signal to the max value and adjust "I MAX" trimmer until the valve regulates the maximum flow or pressure on the hydraulic system.