

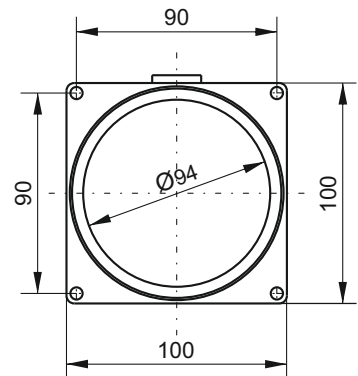
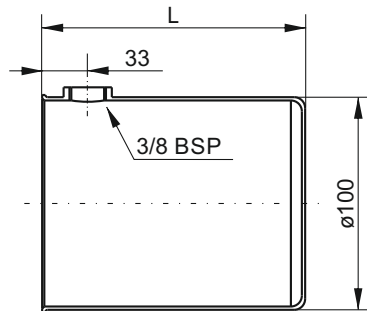
# SECTION E



## ROUND STEEL TANKS F & H SERIES



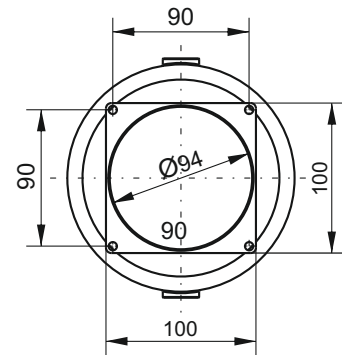
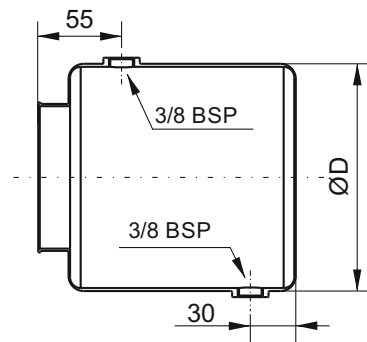
Recommended tightening torque for 3/8" BSPP: 10 Nm



Description	Spare part code	Assembly code	L (mm)	Weight	Actual filling volume (lt)	
					Horizontal	Vertical
0,7 l cylindrical horizontal / vertical mounting	<b>E50403001</b>	<b>0,7F / 0,7FV</b>	120	0,26 Kg	0,75	0,52
1,2 l cylindrical horizontal / vertical mounting	<b>E50403002</b>	<b>1,2F / 1,2FV</b>	186	0,38 Kg	1,1	0,9



Recommended tightening torque for 3/8" BSPP: 10 Nm



Description	Spare part code	Assembly code	L (mm)	ØD (mm)	Weight	Actual filling volume (lt)	
						Horizon.	Vert.
1,7 l cylindrical horizontal / vertical mounting	<b>E50404004</b>	<b>1,7H / 1,7HV</b>	170	120	0,64 Kg	1,5	1,2
2,4 l cylindrical horizontal / vertical mounting	<b>E50404006</b>	<b>2,4H / 2,4HV</b>	170	150	0,8 Kg	2,4	1,8

<b>Material</b>	Fe P04-EN10130 steel sheet 1,5 mm thickness
<b>Fluid</b>	Mineral based oil ISO/DIN 6743/4
<b>Working temperature</b>	-15 / +70°C

Note: the piping kit, standard suction filter, filler/breather and discharge plug are included when specifying the tank in PPM assembly code

When ordering spare parts, only the discharge plug and filler/breather are included