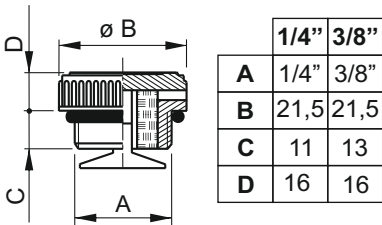


**TANK ACCESSORIES**

**Knurled filler breather with vane  
1/4" - 3/8" BSP**



Weight: 0,01 Kg

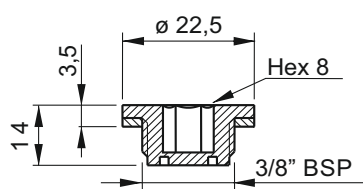
Suitable for R type tanks (1/4" BSPP)  
Suitable for F/H/T type tanks (3/8" BSPP)



**Spare part code**

**C75100001** (1/4 BSPP)  
**C75100002** (3/8 BSPP)

**Drain plug**



Weight: 0,01 Kg

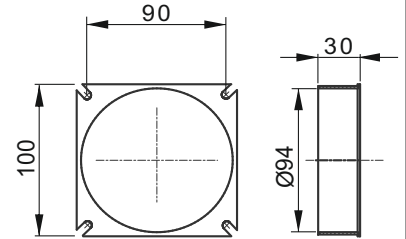
Suitable for F/H/T type tanks



**Spare part code**

**TCNB0702**

**Bare steel tank adapter**



Unpainted, to be welded on custom made tanks

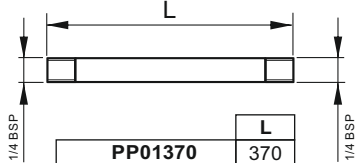
Weight: 0,12 Kg



**Spare part code**

**F80000012**

**1/4" suction/return pipe**



Recommended as suction pipe for PMC02 hand pumps and as return pipe with C3420001 return filter.

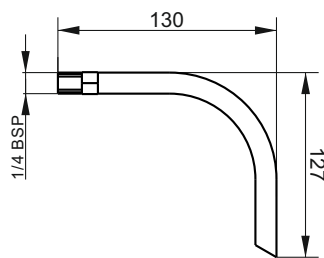
Weight: 0,04 Kg



**Spare part code**

**PP01370**

**90° Plastic pipe for return line**



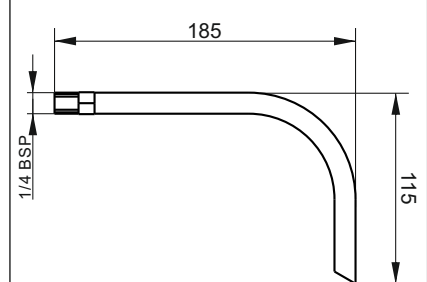
Weight: 0,02 Kg



**Spare part code**

**PP01E130127**

**90° Plastic pipe for return line**



Weight: 0,02 Kg



**Spare part code**

**PP01E185115**