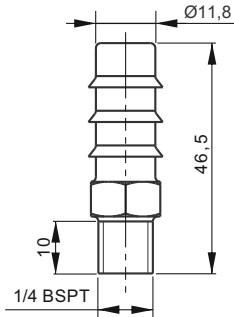


SECTION E



TANK ACCESSORIES

Flexible plastic pipe holder for return line 1/4" BSPT



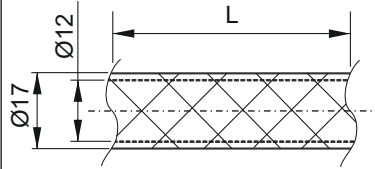
Weight: 0,01 Kg



Spare part code

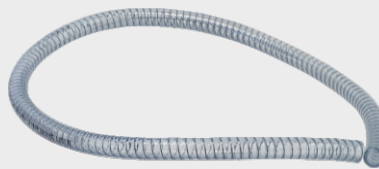
TR0112

Flexible plastic pipe



Recommended as standard return pipe. To be fixed with TR01-12 and cut to correct length. To be ordered in meters.

Weight: 0,18 Kg/meter

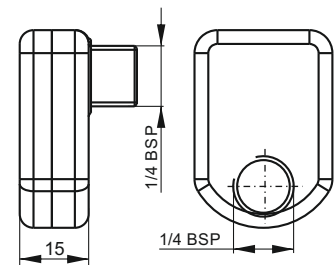


Spare part code

SF12

Micro inlet filter

Filtration degree: 90 micron



Recommended for pumps gr. 0

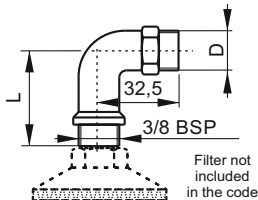
Weight: 0,01 Kg



Spare part code

C34100100

90° elbow for suction pipe M 1/4" & 3/8" BSPT - M 3/8" BSP



| | L | D |
|---------|----|----------|
| PP01E40 | 40 | 1/4 BSPT |
| PP01E77 | 77 | 1/4 BSPT |
| PP02E40 | 40 | 3/8 BSPT |
| PP02E77 | 77 | 3/8 BSPT |

Recommended for horizontal tanks

Weight: 0,01 Kg

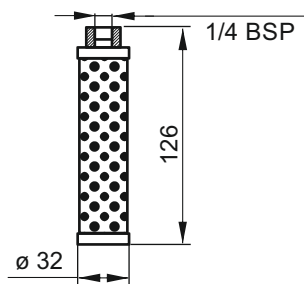


Spare part code

PP0*E**

In-tank return filter

Filtration degree: 90 micron



Suitable for all tanks over 3l

Weight: 0,09 Kg

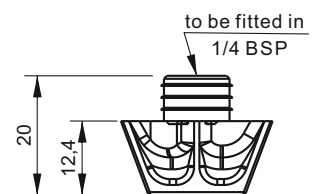


Spare part code

C34200001

Relief valve diffuser

To be mounted in cavity Tr



It reduces foam and noise when relief valve is working. Recommended for all vertical mounted tanks.

Weight: 0,01 Kg



Spare part code

SFEP01D