

SECTION F



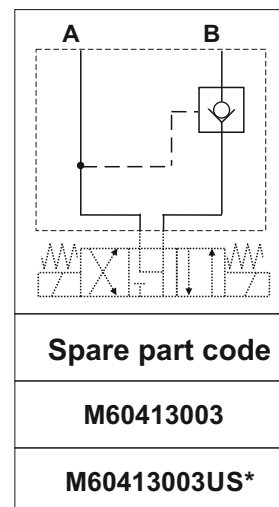
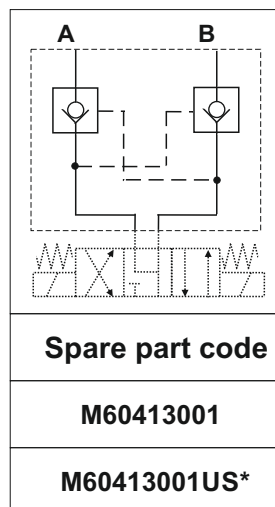
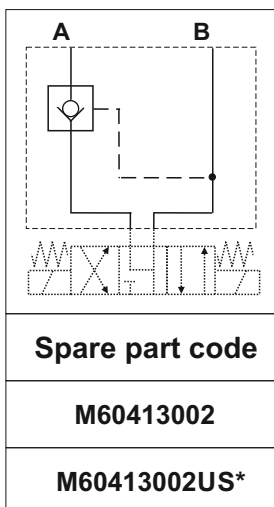
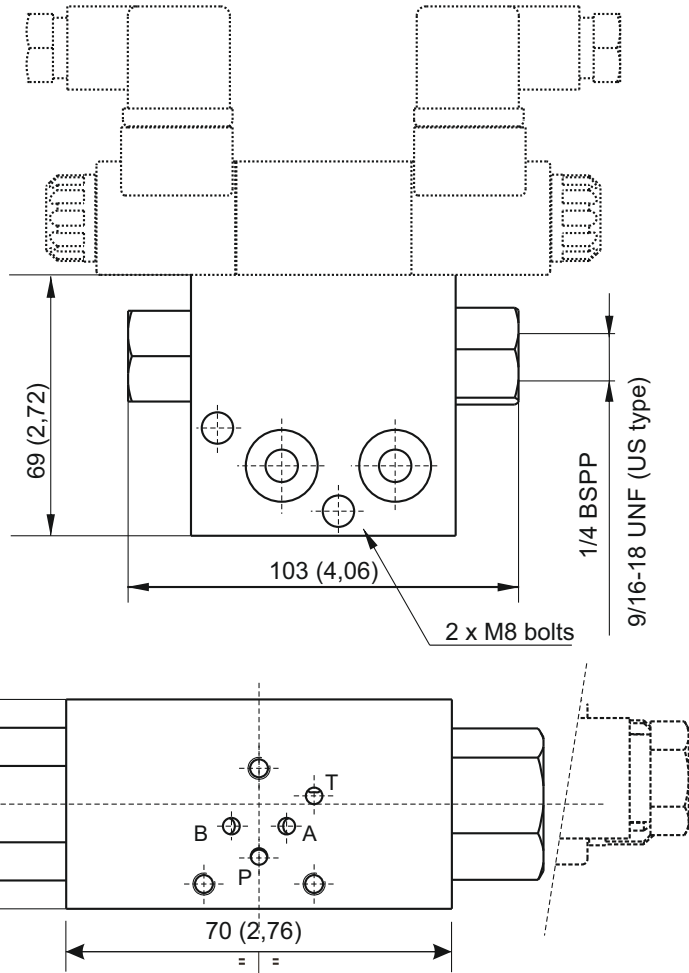
NG3 MODULAR MANIFOLD WITH INTEGRAL PILOT OPERATED CHECK VALVES



Dimensions in mm (inches)

Main features

Max pressure	350 bar
Weight	0,26 Kg (0,57lb)
Fixing bolts	2 M8 tie - rods steel class 8.8 or above



*: US execution with 9/16-18UNF SAE06 exit ports
Code does not include the NG3 valve
Recommended tightening torque for M8 bolts: 16 Nm. Attention! Do not use tie rods with steel class less than 8.8.