

# SECTION F



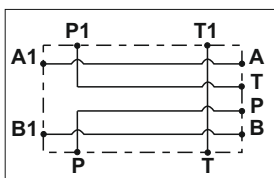
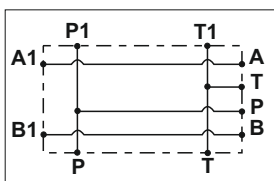
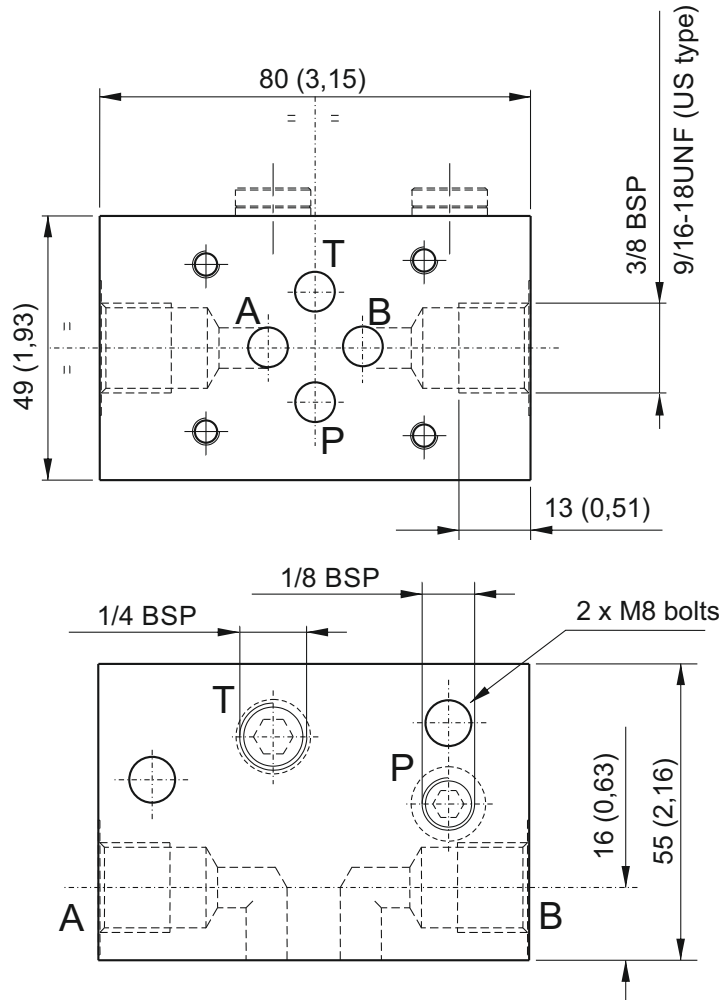
## MODULAR MANIFOLDS NG6 (CETOP 3), LATERAL PORTS



Dimensions in mm (inches)

### Main features

<b>Max pressure</b>	350 bar
<b>Weight</b>	0,56 Kg (1,2lb)
<b>Fixing bolts</b>	2 M8 tie - rods steel class 8.8 or above



<b>Parallel connection</b>	<b>Spare part code</b>
<b>Lateral ports</b>	<b>E60403010</b>
<b>Lateral port US execution</b>	<b>E60403010US</b>

<b>Series connection</b>	<b>Spare part code</b>
<b>Lateral ports</b>	<b>E60403011</b>
<b>Lateral port US execution</b>	<b>E60403011US</b>

**Option 1/4" BSP P port:**

Technical drawing of the 1/4 inch BSP P port option showing dimensions: 33 mm length, 1/4 BSP thread, 1/8 BSP thread, and Hex. 19.

<b>Spare part code</b>
<b>PORTMF0001</b>

Note: Recommended tightening torque for M8 bolts: 16 Nm. Attention! Do not use tie-rods less than 8.8.

To use blocks with a PPC interface on PPM manifold, the M60403008E block must be used.

\*: US execution with 9/16-18UNF SAE06 exit ports

To add external manifolds to a PPM assembly code, just add their spare part codes at the end of the PPM code. eg: PPM-0,8 12DC-MB-J-K0,6-D180-G-RETURN KIT-1,5L+M60403008E+E604030010.

The Cetop attachment is on motor side. Code does not include the Cetop solenoid valve. See NG6 (Cetop 3) valves table in section G.