

SECTION F



MANIFOLD FOR ADDITIONAL SINGLE ACTING CIRCUIT

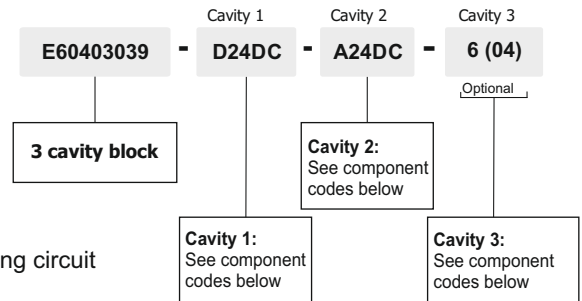


Dimensions in mm (inches)
Typically used to create a single acting circuit in parallel with a double acting circuit

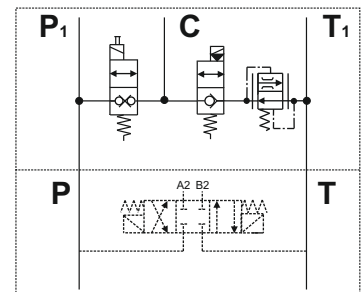
Main features

Max pressure	350 bar
Weight	0,39 Kg (0,88lb)
Fixing bolts	2 M8 tie - rods steel class 8.8 or above

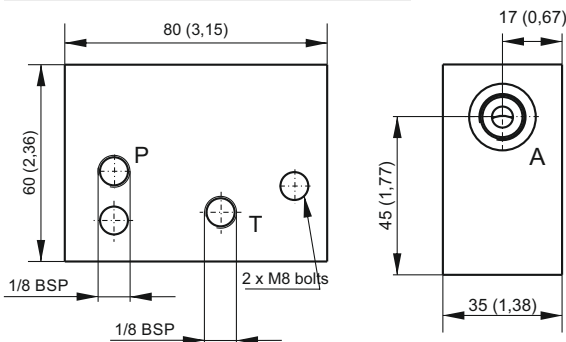
ASSEMBLY CODE - example



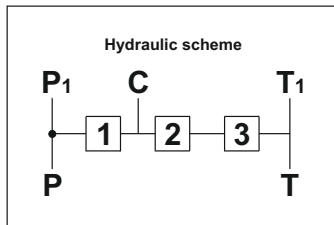
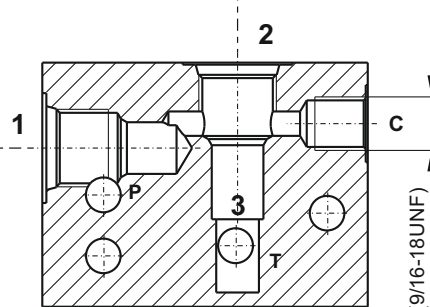
Application example



Spare part code
E60403039
E60403039US*



S		CSB	
Z		CPE	
D		MDV30E	
C		MSV31E	
A		MSV30	
B		MSV30E	
T		CSPC15	
L		E70100004	
N		E70100002	



	CSB		S
	CPE		Z
	MDV30E		D
	MSV31E		C
	MSV30		A
	MSV30E		B
	CSPC15		T
	E70100005		G
	E70100006		P
	E70100003		H
	VSC04		*

Note: to add external manifolds to PPM assembly code, just add their spare part codes at the end of the PPM code.
Example: PPM-0,8 12DC-MB-KM0,4-JM-DM_280-G-1,5T+M60403008E+E6030010+SD03C2+2x24DC_M160.