

NG6 (CETOP 3) SANDWICH MODULAR MANIFOLD FOR SAE08 CARTRIDGE VALVES

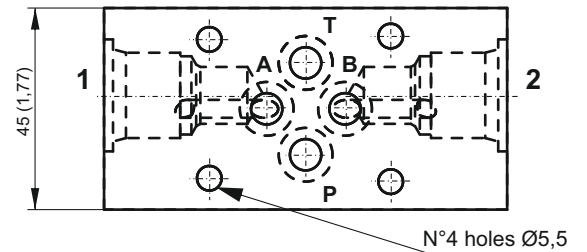
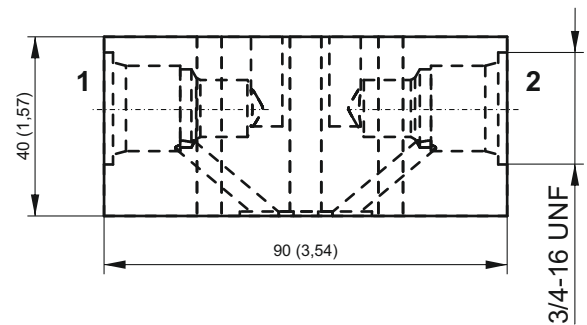
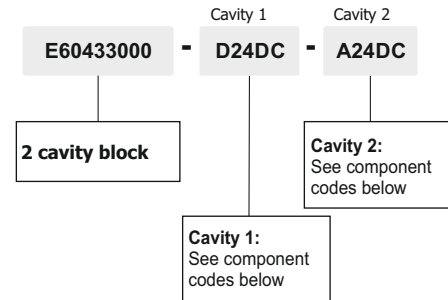


Dimensions in mm (inches)

Main features

Max pressure	300 bar
Max flow	up to 40 l/min
Weight	0,4 Kg (0,88lb)
Fixing bolts	4 M5x** bolts. 5Nm torque 10,9 class steel or above
Fluid temperature	-20 ÷ +80°C
Filtration degree	25 ÷ 50 µ

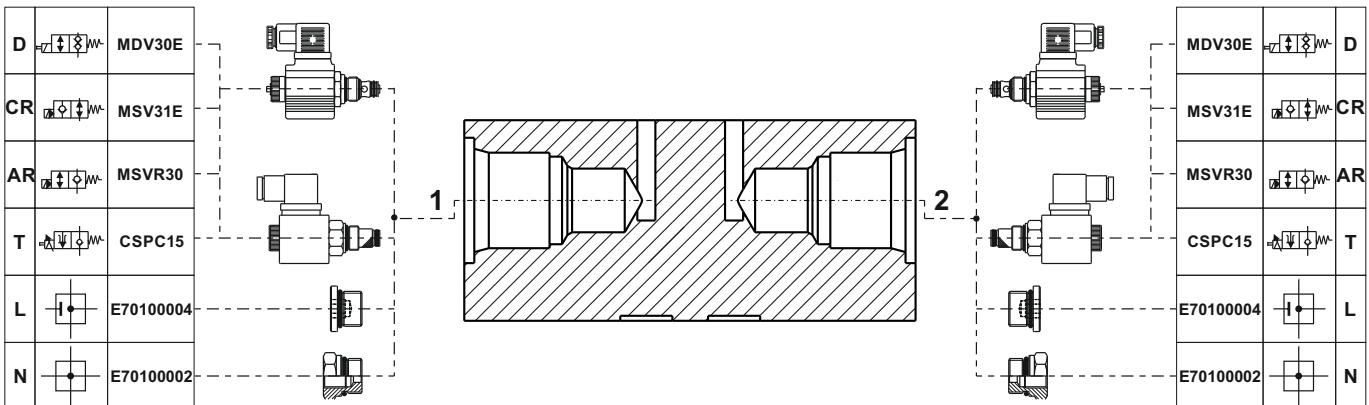
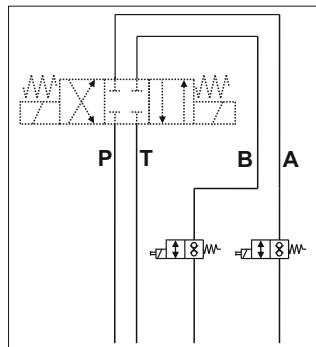
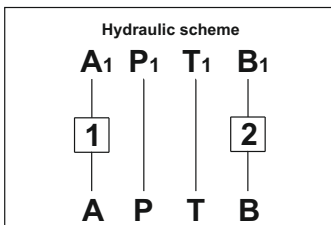
ASSEMBLY CODE - example



Application example

Spare part code

E60433000



Note: to add external manifolds to PPM assembly code, just add their spare part codes at the end of the PPM code.
 Example: PPM-0,8 12DC-MB-KM0,4-JM-DM_280-G-1,5T+M60403008E+E6030010+SD03C2+2x24DC_M160.