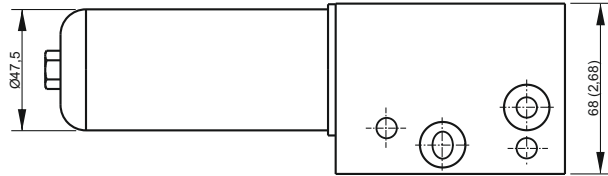
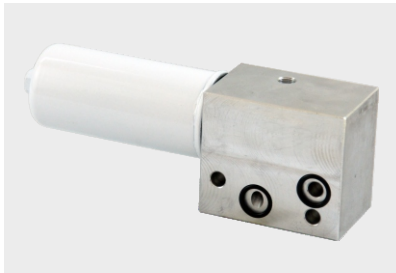


# SECTION F



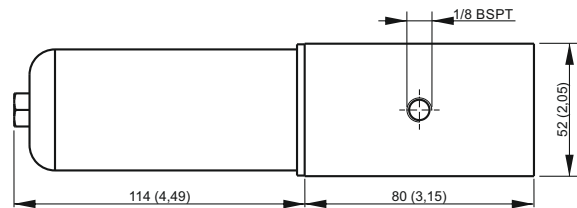
## RETURN LINE FILTER MODULAR MANIFOLD



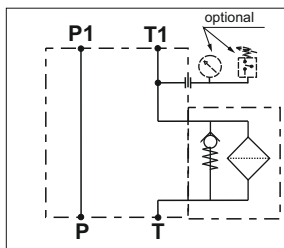
Dimensions in mm (inches)

### Main features

Open by-pass valve press.	1 bar
Max flow	20 l/min
Filtration grade	15 μ
Fluid temperature	-30 ÷ + 80 °C
Weight	0,87 kg
Fixing bolts	2 M8 bolts steel class 8.8 or above



### Hydraulic scheme



Note: standard code does not include the MIR40 pressure gauge or F4 pressure switch

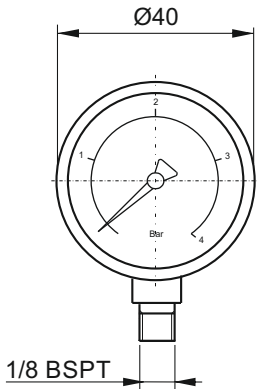
### Spare part code

- E60403020** — Modular manifold with return filter on T
- FO201385** — 15 micron replacement cartridge part number

Note: Recommended tightening torque for M8 bolts: 16 Nm.  
Attention! Do not use tie-rods less than 8.8.  
Recommended tightening torque for spin on cartridge: 10Nm

### OPTIONS

#### Pressure gauge for return filter manifold

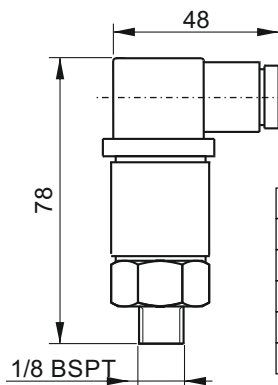


Weight: 0,1 Kg

**Spare part code**

**MIR4004**

#### Pressure switch for return filter manifold



Setting range	0,2 ÷ 2,5 bar
Protection degree	IP 65
Hysteresis	10 ÷ 15 %
Weight	0,05 Kg
Max load	0,5 A a 250 VAC
Electric switch	NO/NC

**Spare part code**

**F4R0M3**

#### Mounting example

