

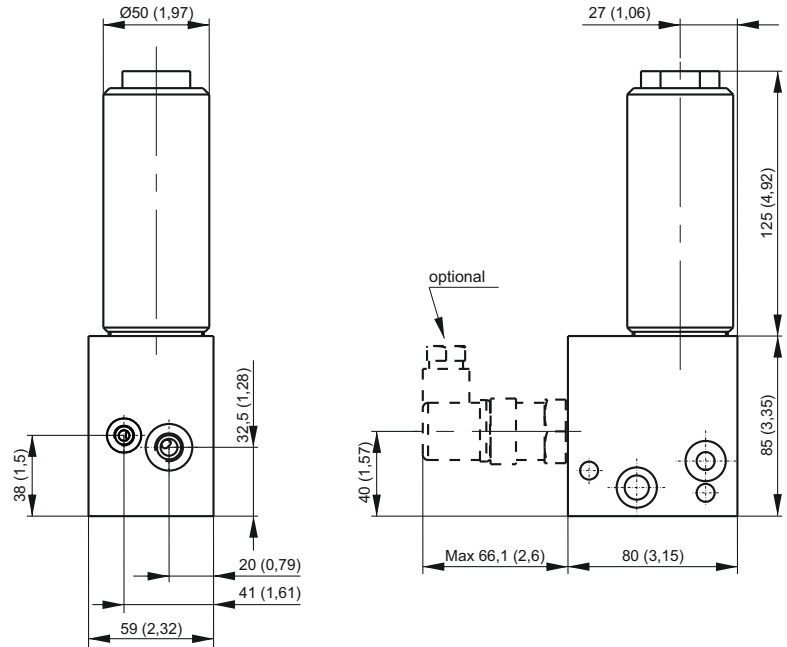
MODULAR BLOCK WITH PRESSURE FILTER



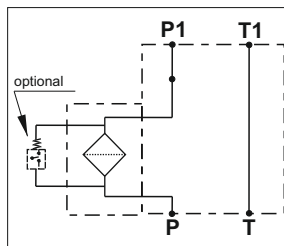
Dimensions in mm (inches)

Main features

Backpressure allowable	21 bar
Max pressure	400 bar
Max flow	32 l/min
Filtration grade	5-15-25 μ
Fluid temperature	-30 + + 80 °C
Weight	2,3 kg
Fixing bolts	2xM8 steel 8.8 or better



Hydraulic scheme



Note: standard code does not include the differential electric or visual pressure switch

Spare part code

- E60403025*** — Modular manifold with pressure filter
- B** — Cartridge filter:
 - A = 5 micron fiber reinforced cartridge filter (cartridge spare part code: HPFEHY05)
 - B = 15 micron fiber reinforced cartridge filter (cartridge spare part code: HPFEHY15)
 - C = 25 micron fiber reinforced cartridge filter (cartridge spare part code: HPFEHY25)

Note: other filtration grades cartridges available on request
 Recommended tightening torque for M8 bolts: 16 Nm.
 Attention! Do not use tie-rods less than 8.8
 Recommended tightening torque for spin on cartridge: 45Nm

OPTIONS

Differential pressure visual indicator

Switching contacts	Red/Green
Ambient temperature	-25 + +80°C
Torque	50 Nm
Proof pressure	675 bar
Max pressure (P1=P2)	400 bar
Pressure rate for set.	10 bar/15 sec
Max different pressure (P1-P2)	200 bar
Diff. pressure setting (horizontal position)	5 bar ± 15%

Spare part code

DPV03400

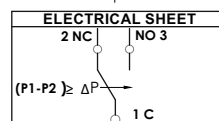
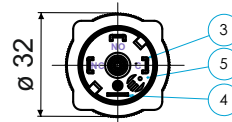
Differential pressure switch

Diff. pressure setting	5 bar ±15%
Protection degree	IP 65
Switching contacts	SPDT
Weight	0,16 Kg
Max different pressure (P1-P2)	200 bar
Proof pressure	675 bar
Max pressure (P1=P2)	450 bar
Torque	50 Nm
Pressure rate for set.	10 bar/15 sec
Ambient temperature	-25 + +85°C
Voltage 14 Vdc	5 (4) A
Voltage 30 Vdc	4 (3) A
Voltage 125 Vdc	5 (3) A
Voltage 250 Vdc	3 (2) A

Spare part code

DPE03400

Diff. pressure setting	5 bar ±15%
Protection degree	IP 65
Switching contacts	SPDT
Weight	0,16 Kg
Max different pressure (P1-P2)	200 bar
Proof pressure	675 bar
Max pressure (P1=P2)	450 bar
Torque	50 Nm
Pressure rate for set.	10 bar/15 sec
Ambient temperature	-25 + +85°C
Voltage 14 Vdc	5 (4) A
Voltage 30 Vdc	4 (3) A
Voltage 125 Vdc	5 (3) A
Voltage 250 Vdc	3 (2) A



Mounting example

