

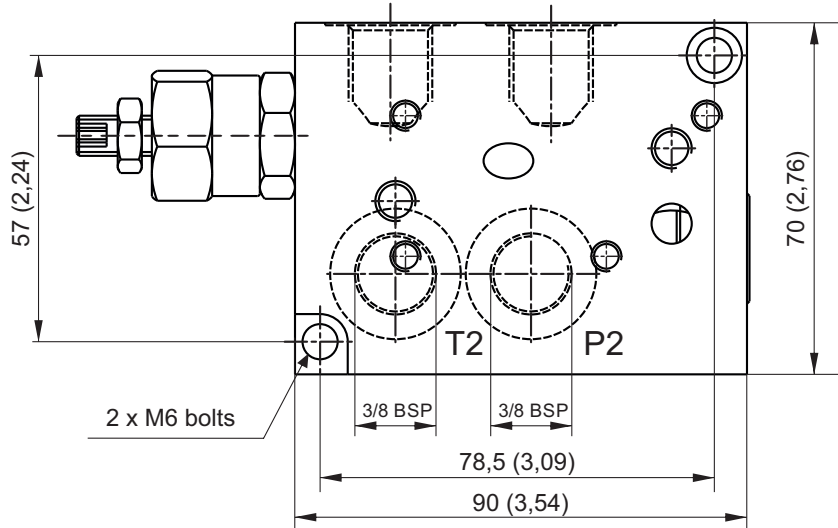
**IN-LINE MOUNTING BASE PLATE FOR MODULAR BLOCKS**



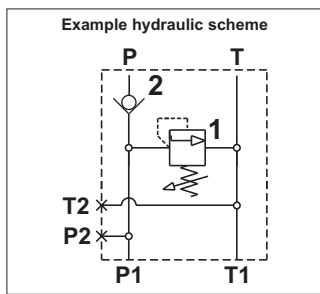
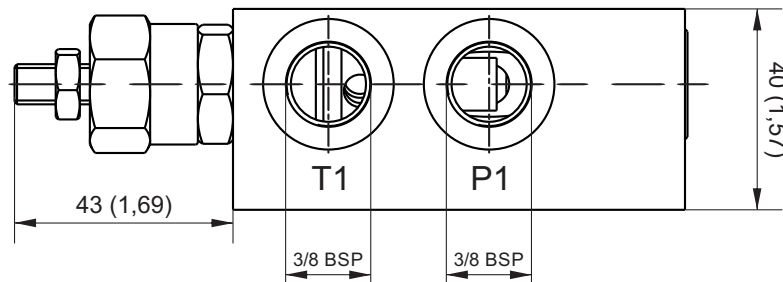
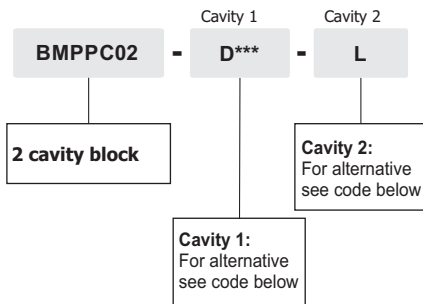
Dimensions in mm (inches)

**Main features**

<b>Max flow</b>	40 l/min
<b>Max pressure</b>	350 bar
<b>Weight</b>	0,58 Kg (1,28 lb)
<b>Fixing bolts</b>	2 M8 or 4xM6 tie - rods steel class 8.8 or above



**ASSEMBLY CODE - example**



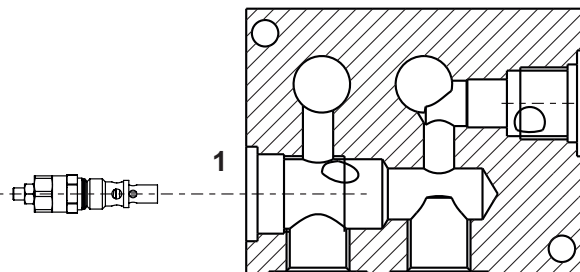
BMPPC02 allows you to mount off-line the entire system of Hydronit modular blocks and valves.

A typical application is to use it on a conventional powerpack, where the control block and the valve are separated from the engine driven pump. P1 and T1 ports are closed by 3/8" BSP plugs in standard configuration. You can use these ports dismounting the plugs and using the same to close P2 and T2 ports.

See cavity 1 VMDC35 table in section G.

See cavity 2 components and plugs tables in section D.

D60		VMDC35L1	L1
D180		VMDC35A1	A1
D310		VMDC35B1	B1
D350		VMDC35C1	C1



	VUC20		J
	CSB04		S
	E70100004		L
	E70100002		N