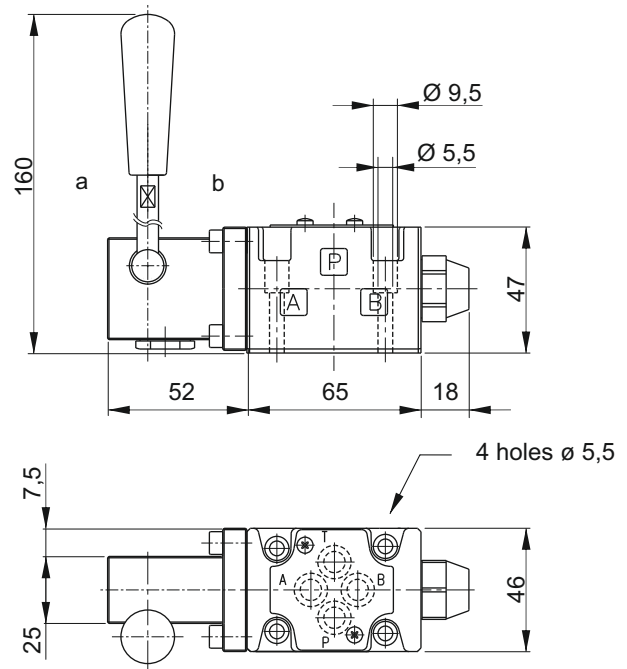


# SECTION G



## NG6 (CETOP 3) MANUAL DIRECTIONAL CONTROL VALVES



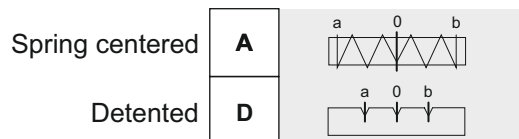
### Main features

Max pressure	300 bar
Max pressure on T port	150 bar
Max flow	30 l/min
Weight	1,32 kg
Fixing bolts	4 M5x30 bolts 5Nm torque 10,9 class steel or above
Fluid temperature	-20 ÷ +80°C
Filtration degree	25 ÷ 50 µ

### Spare part code

- HD03** — Cetop 3 manual directional control valve
- A** — Spool control: see table below
- 1** — Spool configuration see table below
- — Options: - = std

### Spool control



### Spool

