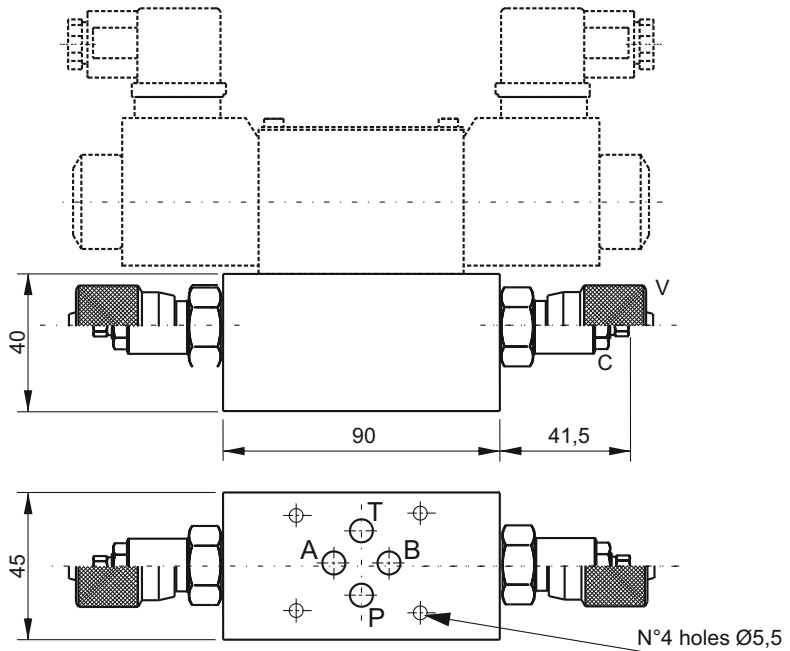


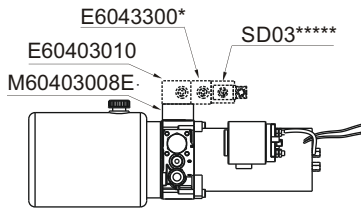
SECTION G



NG6 (CETOP 3) SANDWICH FLOW CONTROL VALVE



Mounting example

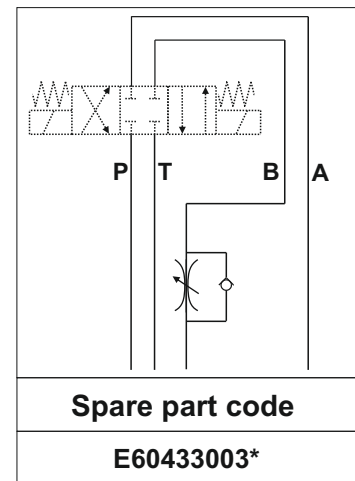
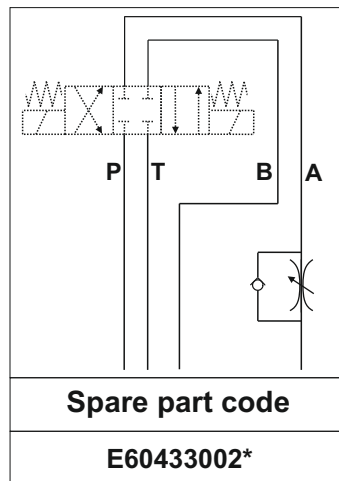
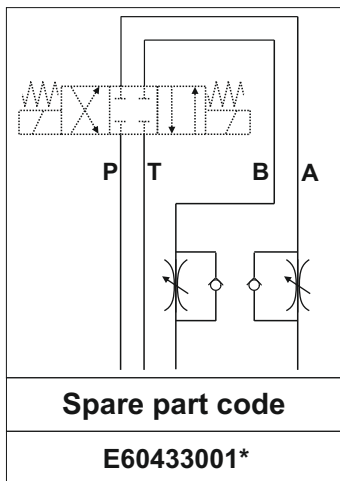


Main features

Max pressure	300 bar
Max flow	15 l/min
Weight	Single valve: 0,52 kg Double valve: 0,64 kg
Fixing bolts	4 M5x° bolts. 5Nm torque 10,9 class steel or above
Fluid temperature	-20 + +80°C
Filtration degree	25 + 50 µ

Spare part code

- E6043300**** — NG6 (Cetop 3) sandwich meter-out flow control valve
- 1** — Type:
 - 1 = on A and B
 - 2 = on A
 - 3 = on B
- — Adjusting device:
 - = screw (std)
 - V = handwheel



Notes: code does not include the Cetop solenoid valve.
° Bolt length depends on number of modular blocks and type of valve.