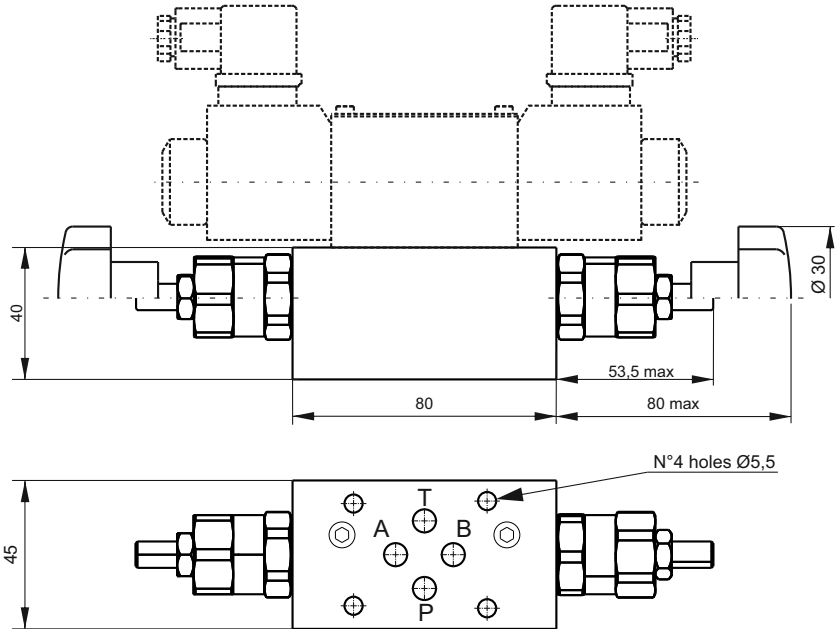
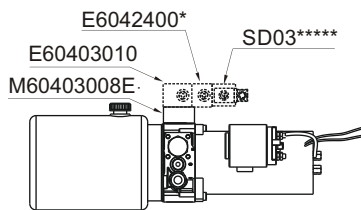


NG6 (CETOP 3) SANDWICH RELIEF VALVE



Mounting example

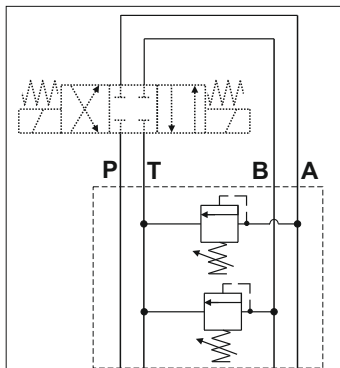


Main features

Max pressure	350 bar
Max flow	20 l/min
Weight	Single valve: 0,52 kg Double valve: 0,64 kg
Fixing bolts	4 M5x° bolts. 5Nm torque 10,9 class steel or above
Fluid temperature	-20 ÷ +80°C
Filtration	25 ÷ 50 µ

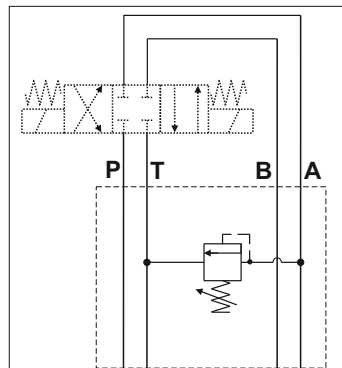
Spare part code

- E6042400**** — NG6 (Cetop 3) sandwich relief v.
- 1** — **Type:**
1 = on A and B
2 = on A
3 = on B
- B** — **Pressure range settings:**
A = 3 ÷ 60 bar
B = 40 ÷ 120 bar
C = 80 ÷ 250 bar
D = 150 ÷ 350 bar
- *** — **Option:**
see VMDC20 table in section D



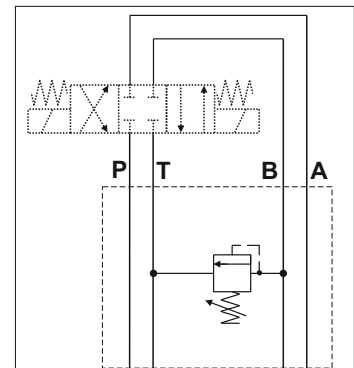
Spare Part Code

E60424001**



Spare Part Code

E60424002**



Spare Part Code

E60424003**

Notes: code does not include the Cetop solenoid valve. When E60423001 relief valves have different pressure ranges, please specify them separately.

eg: E60424001AB=60 bar max for valve on A port, 120bar max for valve on B port.

° Bolt length depends on number of modular blocks and type of valve.