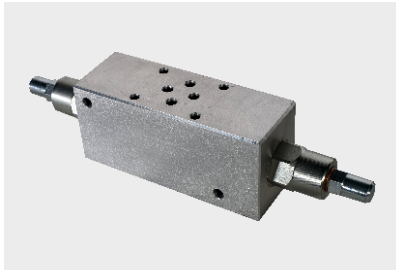
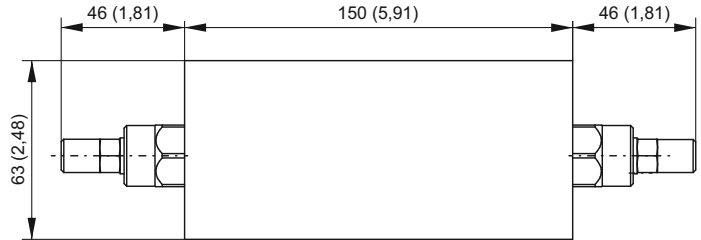


**NG6 (CETOP 3) SANDWICH MODULAR OVERCENTRE VALVE**

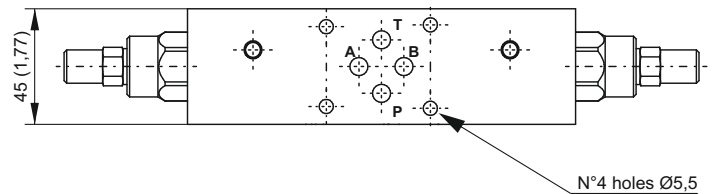


Dimensions in mm (inches)



**Main features**

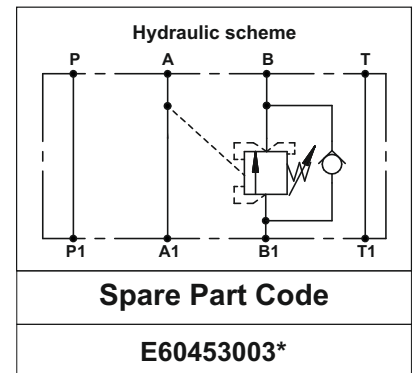
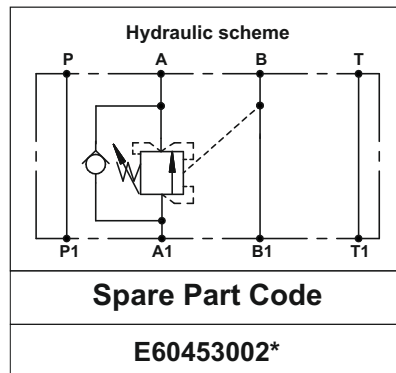
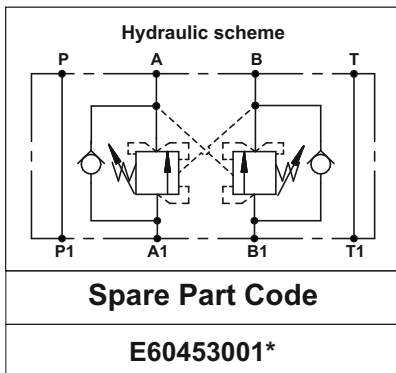
<b>Max pressure</b>	350 bar
<b>Max flow</b>	up to 50 l/min
<b>Fixing bolts</b>	4 M5x** bolts. 5Nm torque 10,9 class steel or above
<b>Fluid temperature</b>	-30 ÷ +80°C
<b>Filtration degree</b>	25 ÷ 50 µ
<b>Pilot ratios</b>	4.25:1



Setting pressure must be at least 1,3 times the maximum load induced pressure.

**Spare part code**

- E6045300\*\*** — **NG6 (Cetop 3) sandwich overcentre valve**
- 1** — **Type:**  
1: on A and B  
2: on A  
3: on B
- A** — **Pressure range settings:**  
A = 30 ÷ 220 bar  
B = 60 ÷ 350 bar



Note: to add external manifolds to PPC assembly code, just add their spare part codes at the end of the PPC code.  
eg: PPC-0,8 12DC-UA-J-G1,1-V200-G-RETURN KIT-1,5L+E60403004-E60403010-E60453001+SD03A2 12DC.