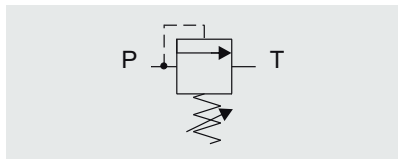
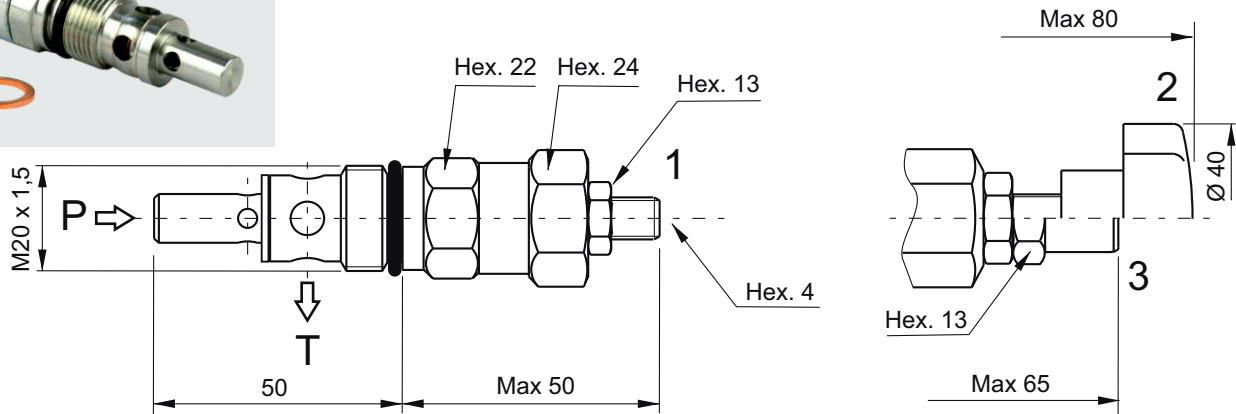


# SECTION G



## VMDC35 - DIRECT ACTING RELIEF VALVE



### Main features

Max pressure	450 bar
Max flow	35 l/min
Weight	0,16 kg

Recommended tightening torque: 50 Nm  
 Recommended filtration: 25 + 50 μ  
 Oil temperature: -30 + + 80 °C

### Spare part code

- VMDC** — Relief valve
- 35** — Nominal size:  
35 = 35 l/min
- B** — Working range:  
L = 5 ÷ 60 bar  
A = 10 ÷ 180 bar  
B = 35 ÷ 310 bar
- 1** — Option:  
1 = screw (std)  
2 = handwheel  
3 = with cap  
4 = plastic seal

### Assembly code

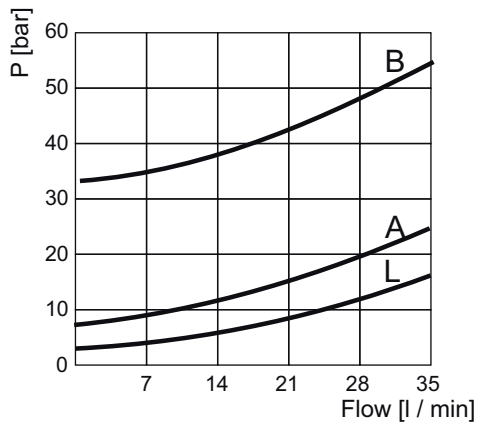
**D\_\*\*\*♦**

where \*\*\* stands for max setting pressure [bar], eg. D\_310  
 where ♦ is the option

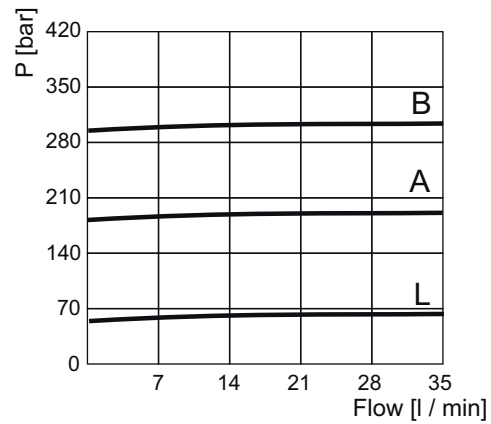
### Mounting:

Only in BMPPC02 block, see F section

Minimum setting pressure



Pressure vs Flow



Note: Values measured on valve alone (no cavity) with an oil viscosity of 46 cSt at 50 °C. Pressure drop may change depending on fluid viscosity and temperature