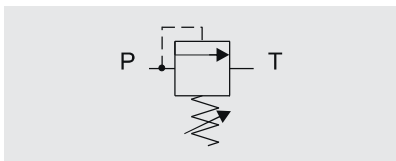
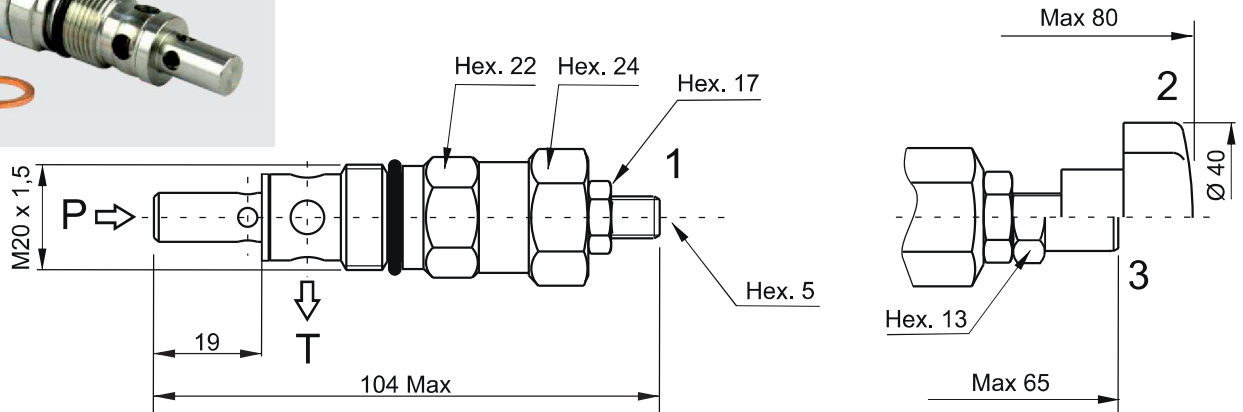


SECTION G



VMDC35 - DIRECT ACTING RELIEF VALVE



Main features

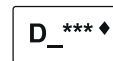
Max pressure	350 bar
Max flow	40 l/min
Weight	0,16 kg

Recommended tightening torque: 50 Nm  
 Recommended filtration: 25 + 50 μ  
 Oil temperature: -30 + + 80 °C

Spare part code

- VMDC** — Relief valve
- 35** — Nominal size:  
35 = 35 l/min
- M** — Working range:  
M = 5 ÷ 50 bar  
N = 30 ÷ 100 bar  
O = 50 ÷ 220 bar  
P = 80 ÷ 350 bar
- 1** — Option:  
1 = screw (std)  
2 = handwheel  
3 = with cap  
4 = plastic seal

Assembly code

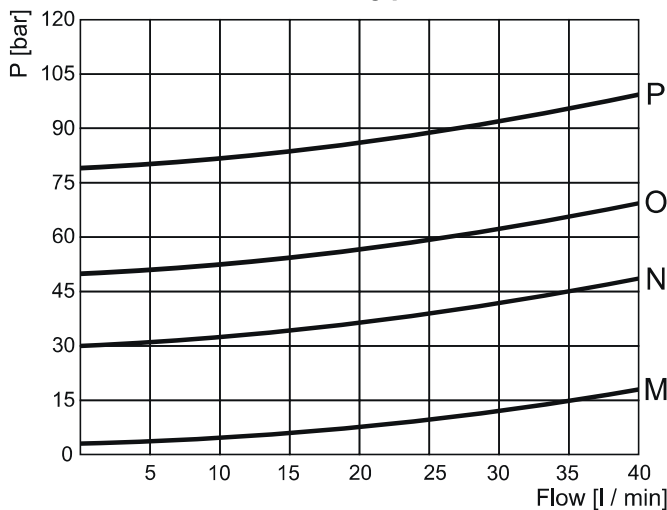


where \*\*\* stands for max setting pressure [bar], eg. D\_310 where ♦ is the option

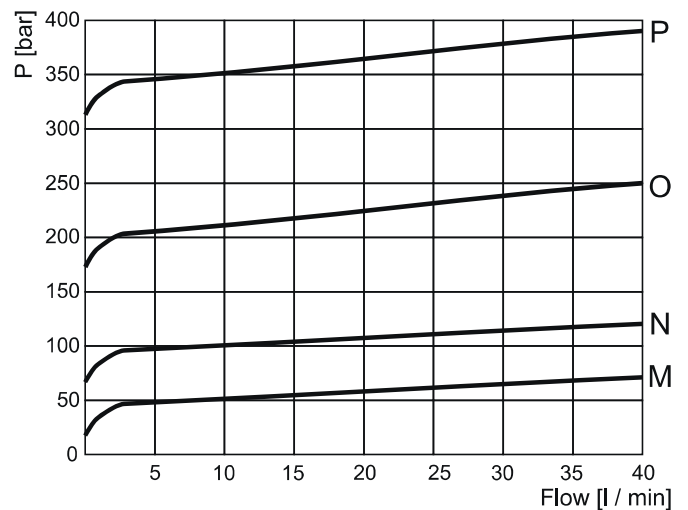
Mounting:

Only in BMPPC02 block, see F section

Minimum setting pressure



Pressure vs Flow



Note: Values measured on valve alone (no cavity) with an oil viscosity of 46 cSt at 50 °C. Pressure drop may change depending on fluid viscosity and temperature.