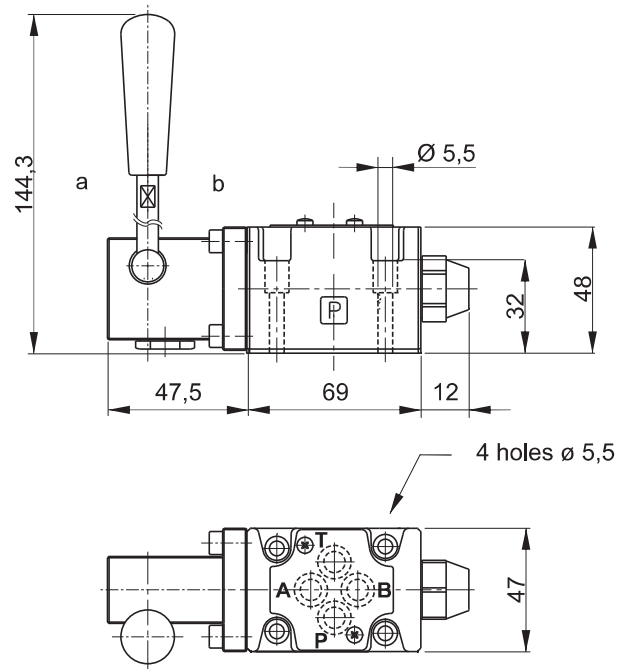


**NG6 (CETOP 3) MANUAL DIRECTIONAL CONTROL VALVES LC SERIES**



**Main features**

Max pressure	310 bar
Max pressure on T port	210 bar
Max flow	25 l/min
Weight	0,8 kg
Fixing bolts	4 M5x30 bolts 5Nm torque 10,9 class steel or above
Fluid temperature	-20 + +80°C
Filtration degree	25 ÷ 50 µ



**Spare part code**

- HD03LC** — Cetop 3 manual directional control valve LC series
- A** — Spool control: see table below
- 1** — Spool configuration see table below
- — Options: - = std

**Spool control**

**Spool**

