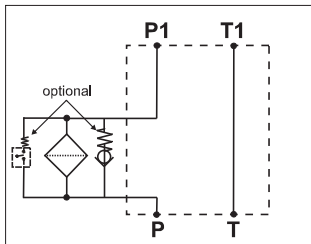
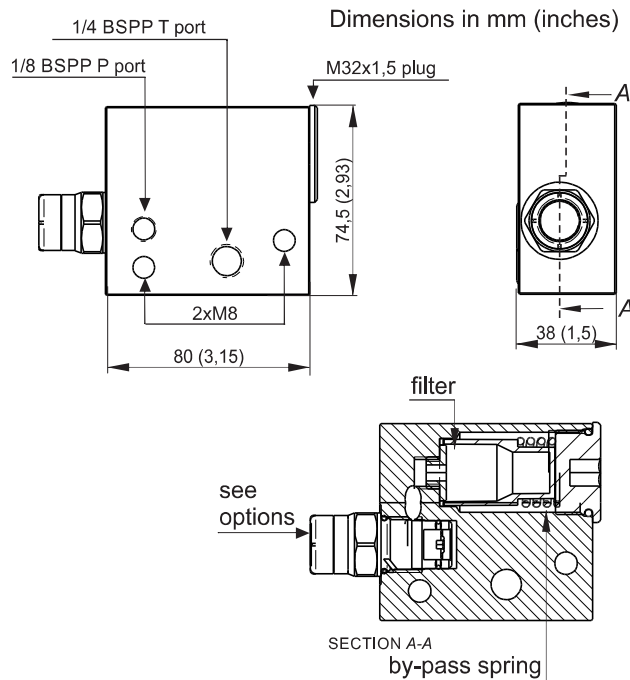


**COMPACT PRESSURE LINE MODULAR MANIFOLD FILTER**



**Main features**

<b>Max pressure</b>	350 bar
<b>Weight</b>	0,65 kg (1,42 lb)
<b>Fixing bolts</b>	2xM8 tie-rods steel class 8.8 or above
<b>Filtration degree</b>	10 micron 25 micron
<b>By-pass option</b>	Opening: ≈10 bar max flow: 6 l/min

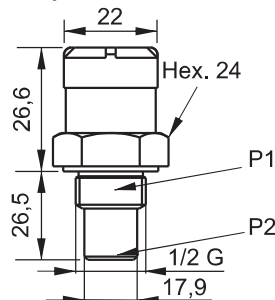


**Spare part code**  
**EMASH000\*\***

\*\*

- Type:**  
 15: 10 micron + bypass  
 16: 25 micron + bypass  
 20: 10 micron  
 21: 25 micron

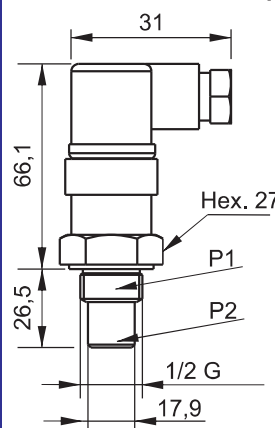
**Differential pressure visual indicator**



Switching contacts	Red/Green
Ambient temperature	-25 + +80°C
Torque	50 Nm
Proof pressure	675 bar
Max pressure (P1=P2)	400 bar
Pressure rate for set.	10 bar/15 sec
Max different pressure (P1-P2)	200 bar
Diff. pressure setting (horizontal position)	5 bar ± 15%

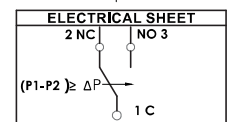
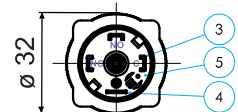
**Spare part code**  
**DPV03400**

**Differential pressure switch**



Diff. pressure setting	5 bar ±15%
Protection degree	IP 65
Switching contacts	SPDT
Weight	0,16 Kg
Max different pressure (P1-P2)	200 bar
Proof pressure	675 bar
Max pressure (P1=P2)	450 bar
Torque	50 Nm
Pressure rate for set.	10 bar/15 sec
Ambient temperature	-25 + +85°C
Voltage 14 Vdc	5 (4) A
Voltage 30 Vdc	4 (3) A
Voltage 125 Vdc	5 (3) A
Voltage 250 Vdc	3 (2) A

**Spare part code**  
**DPEV03400**



Spare	Cartridge code
10 micron	EAFTH00001
25 micron	EAFTH00002

Note: to add external manifolds to PPC assembly code, just add their spare part codes at the end of the PPC code.  
 Example: PPC-0,8 12DC-UA-G1,1-J-V200-G-RETURN KIT-1,5L+EMASH000\*\*+E60433000+...

**This block must be mounted as first among the external ones.**

**For more info and for a mounting example, please see E60433001 code (NG6 CETOP 3 flow control sandwich valve) in G section.**  
 The Cetop valve attachment is on the motor side. With AC motor frames bigger than 71 and DC motors bigger than dia. 125, always add a spacer manifold (see E60403004 code in F section) below the modular block to avoid interference between the valve and the motor.