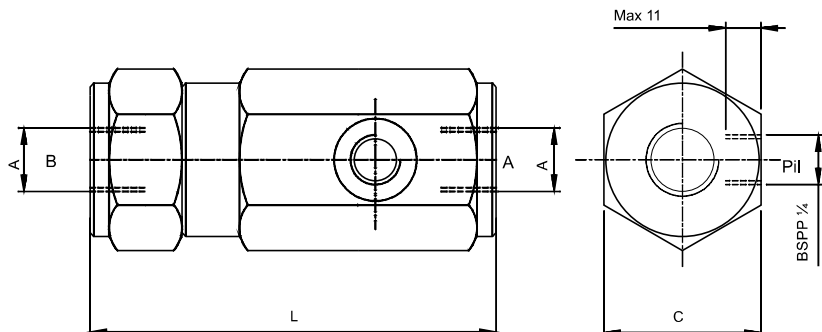


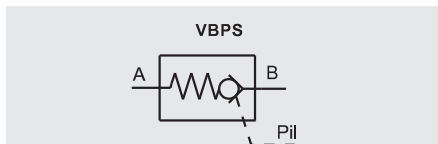
VBPS - IN-LINE PILOT OPERATED CHECK VALVE



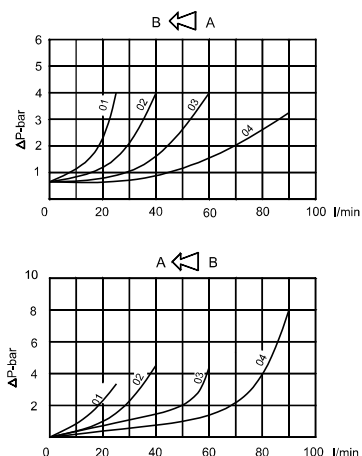
Description

These valves allow oil flow in one way only. On the opposite side the sealing is guaranteed by a steel tapered, hardened and grinded poppet. Oil flow in opposite way is possible only supplying a pressure on the pilot line according to the pilot ratio. The spring allows the valve installation in any position. External body is protected against corrosion by zinc plating.

Standard graphical symbol



Pressure drop diagrams



Ordering code

- VBPS** — In-line pilot operated check valve
- 01** — Size: 01, 02, 03, 04

Code	A	L	C	Pilot ratio	Opening pressure bar	Max pressure [bar]	Max flow [l/min]	Weight [Kg]
VBPS01	BSPP 1/4	100	36	1:5	0,5	350	25	0,75
VBPS02	BSPP 3/8	105	41	1:4,4	0,5	350	40	1
VBPS03	BSPP 1/2	125	41	1:4,2	0,5	350	60	1,1
VBPS04	BSPP 3/4	130	55	1:4	0,5	300	90	2