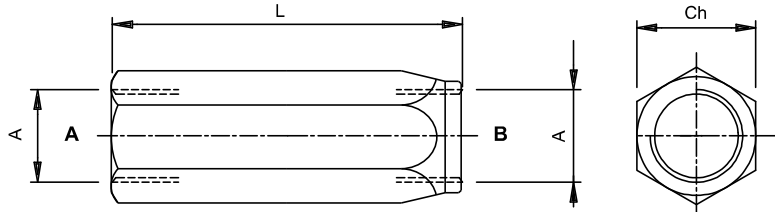
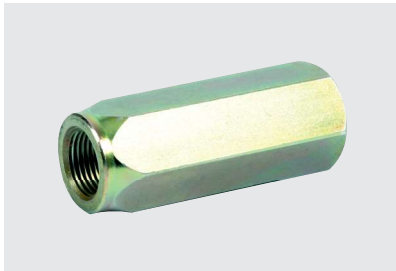


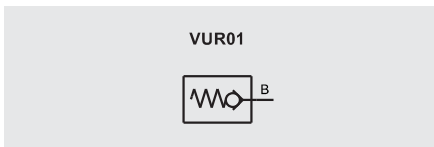
**VUR - IN-LINE CHECK VALVE**



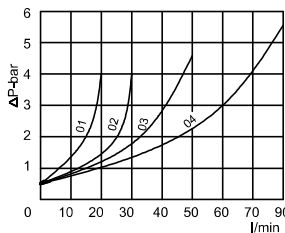
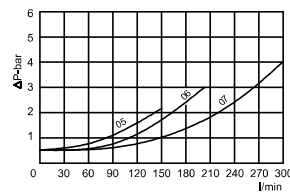
**Description:**

These valves allow oil flow in one way only. On the opposite side the sealing is guaranteed by a steel tapered, hardened and grinded poppet or ball. The spring allows the valve installation in any position. External body protected against corrosion by zinc plating.

**Standard graphical symbol**



**Pressure drop diagram**



**Ordering code**

- VUR** — Cartridge check valve
- 01** — Size:  
01, 02, 03,  
04, 05, 06, 07
- C** — Type:  
C = Poppet type  
S = Ball type  
(only for VUR-01,  
VUR-02)
- — Opening pressure:  
- = 1 bar standard  
3 = 3 bar  
6 = 6 bar

Code	A	L	Ch	Max pressure [bar]	Max flow [l/min]	Weight [Kg]
VUR01	BSPP 1/4	62	19	350	20	0,10
VUR02	BSPP 3/8	68	24	350	45	0,18
VUR03	BSPP 1/2	77	30	350	70	0,32
VUR04	BSPP 3/4	88	36	350	110	0,49
VUR05	BSPP 1	105	41	350	160	0,68
VUR06	BSPP -1/4	123	55	250	200	1,49
VUR07	BSPP1-1/2	138	65	210	300	2,40