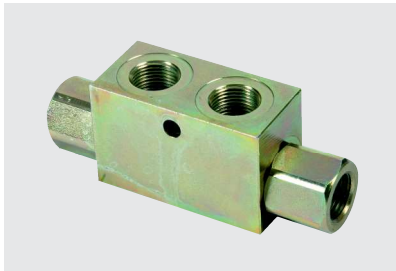
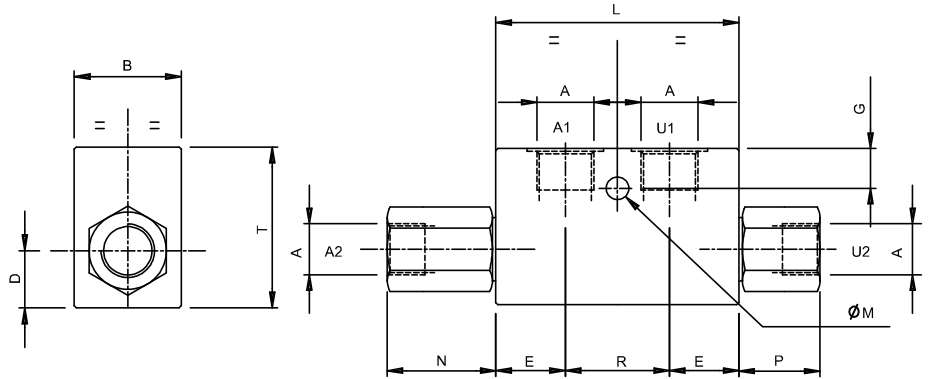


VRSE*F - PILOT OPERATED CHECK VALVE

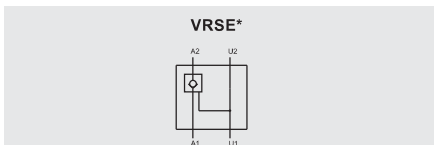


Description:

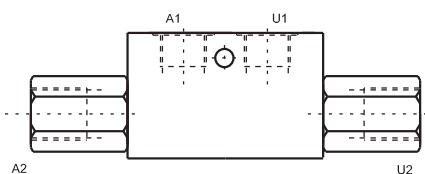
These valves lock single acting cylinder not allowing any external force to change its position. Sealing is guaranteed by hardened ground tapered poppets. The valve can be unlocked feeding A or U ports. They can be mounted in any position and are protected by zinc plating.



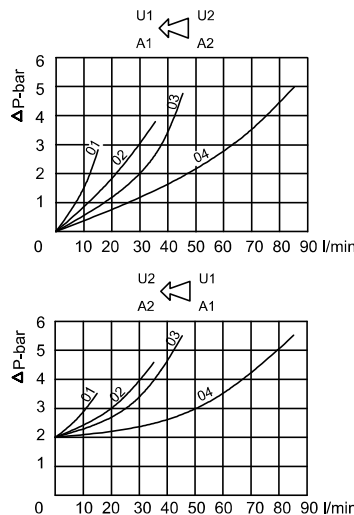
Standard graphical symbol



Ports type "F" thread



Pressure drop diagrams



Ordering code

- VRSE** — Pilot operated check valve
VRSE = single acting
- 01** — Size:
01, 015, 02, 03, 04
- F** — Ports
A = DIN 2353 (not for size 04)

Code	A	B	D	E	F	G	L	M	N	R	T	Pilot ratio	Max pressure [bar]	Max flow [l/min]	Weight [Kg]
VRSE01F	BSPP 1/4	30	13	15	25	7	68	7	25	38	40	1:4,5	350	20	0,68
VRSE015F	BSPP 3/8	30	13	15	25	7	68	7	25	38	40	1:4,5	350	20	0,63
VRSE02F	BSPP 3/8	30	14	21	16	8	80	8	24	38	40	1:5,5	350	35	0,74
VRSE03F	BSPP 1/2	35	16	22,5	17	8	90	8	26	45	45	1:5	350	50	1,04
VRSE04F	BSPP 3/4	40	22	27	36	8	100	8	46	48	60	1:4	300	100	1,92