

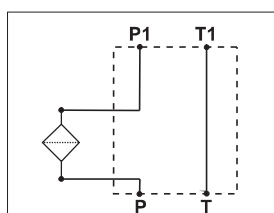
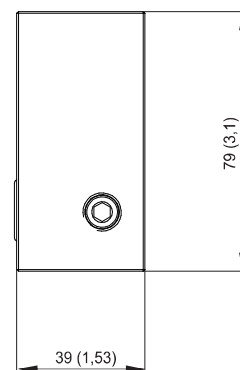
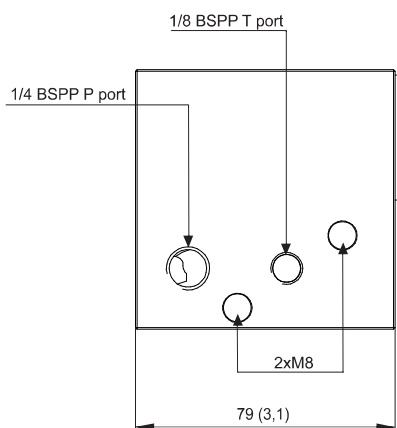
COMPACT PRESSURE LINE MODULAR MANIFOLD FILTER



Main features

Max pressure	350 bar
Weight	0,65 kg (1,42 lb)
Fixing bolts	2xM8 tie-rods steel class 8.8 or above
Filtration degree	10 micron 25 micron

Dimensions in mm (inches)



Spare part code

EMASH000**

**

Type:

38: 10 micron
39: 25 micron

Spare	Cartridge code
10 micron	EAFTH00001
25 micron	EAFTH00002

Note: to add external manifolds to PPC assembly code, just add their spare part codes at the end of the PPC code.

Example: PPM-0,8 12DC-MB-JM-G0,1-DM_280-G-RETURN KIT-G-1,5L+EMASH00038-39....

This block must be mounted as first among the external ones.

For more info and for a mounting example, please see E60433001 code (NG6 CETOP 3 flow control sandwich valve) in G section. The Cetop valve attachment is on the motor side. With AC motor frames bigger than 71 and DC motors bigger than dia. 125, always add a spacer manifold (see E60403004 code in F section) below the modular block to avoid interference between the valve and the motor.